



Lines in space  
by Nancy Bales Nordtvedt

A thesis submitted in partial fulfillment of the requirements for the degree of MASTER OF APPLIED ART

Montana State University

© Copyright by Nancy Bales Nordtvedt (1978)

Abstract:

The human body, its forms, connective structures, stresses, changes of direction and movement are influential in my work. Consciously and intuitively my compulsion is to reflect the body's shapes in metal forms. These pieces have a natural relationship with the body's curves, angles, planar strength and shifting surfaces.

My technical involvement includes the use of traditional techniques of blacksmithing and forging as they can be applied to the design of contemporary jewelry and metal forms.

There is an excitement in utilizing contrasts in material, steel and copper against the richness of colored silk, ivory and fine silver. These are symbols of utility and durability, hard and cold, juxtaposed against symbols of elegance and fragility, soft, colorful and richly lustrous.

The formal aspects of lines drawn in space represent paths of movement, rhythm and form. Asymmetry produces visual tension and linear involvement which surrounds and encloses space, creating negative areas that play against one another.

I have combined these elements, and by limiting my materials and techniques, explored and expanded the artistic possibilities within, a small area of metal smithing.

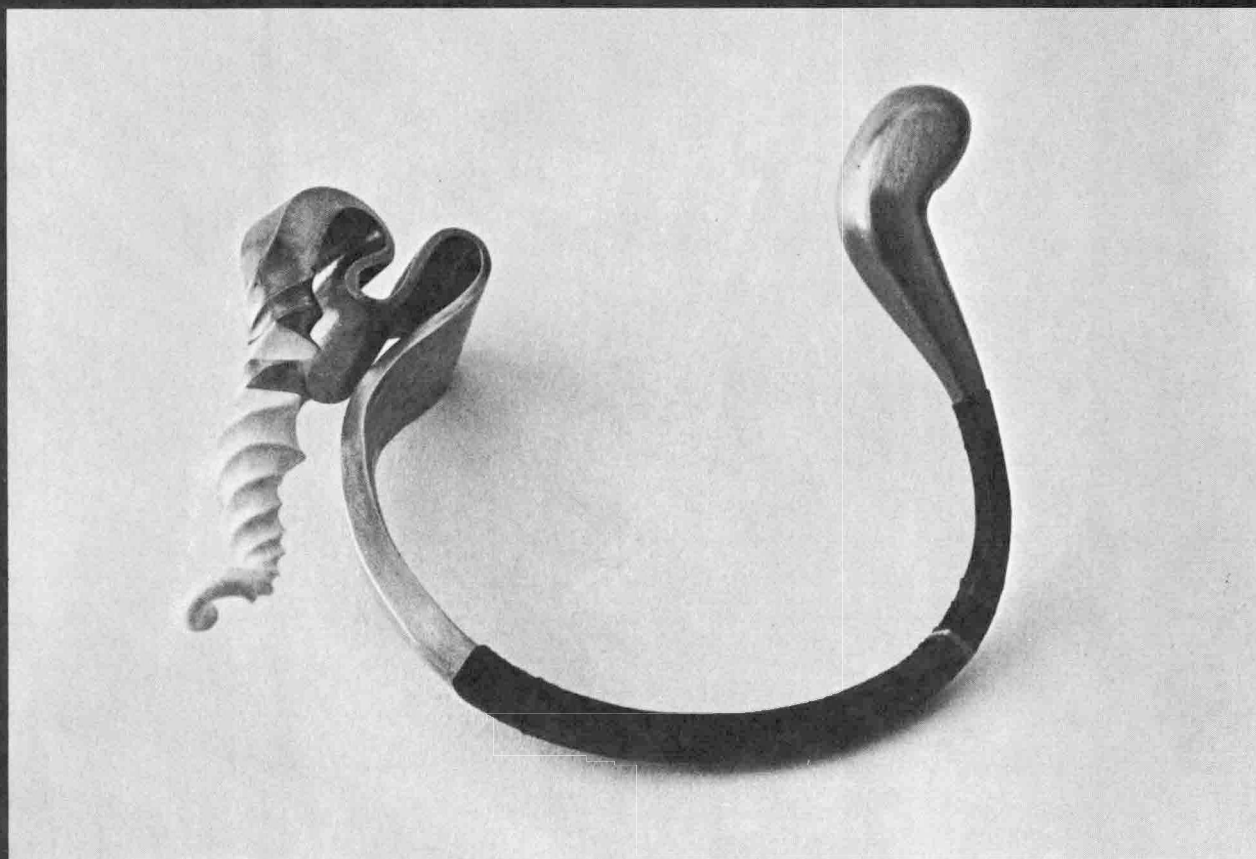
Montana State University  
School of Art, Haynes Hall

May 22 through June 2, 1978

Thesis Exhibition

METALSMITH

**NANCY NORDTVEDT**



STATEMENT OF PERMISSION TO COPY

In presenting this thesis in partial fulfillment of the requirements for an advanced degree at Montana State University, I agree that the Library shall make it freely available for inspection. I further agree that permission for extensive copying of this thesis for scholarly purposes may be granted by my major professor, or, in his absence, by the Director of Libraries. It is understood that any copying or publication of this thesis for financial gain shall not be allowed without my written permission.

Signature Nancy Sales Nordtveit  
Date May 24, 1978

LINES IN SPACE

by

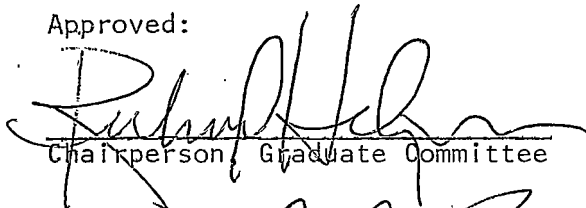
NANCY BALES NORDTVEDT

A thesis submitted in partial fulfillment  
of the requirements for the degree

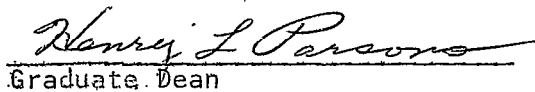
of

MASTER OF APPLIED ART

Approved:

  
Chairperson, Graduate Committee

  
Head, Major Department

  
Graduate Dean

MONTANA STATE UNIVERSITY  
Bozeman, Montana

June, 1978

## ACKNOWLEDGEMENT

I wish to express my gratitude to the art faculty, especially Richard Helzer, Kyle Hanton and Rick Pope. Their support, encouragement and insight was essential to the development of my ideas and my work. I would also like to thank Pat Gilbert for her help and understanding.

## ARTIST'S STATEMENT

The human body, its forms, connective structures, stresses, changes of direction and movement are influential in my work. Consciously and intuitively my compulsion is to reflect the body's shapes in metal forms. These pieces have a natural relationship with the body's curves, angles, planar strength and shifting surfaces.

My technical involvement includes the use of traditional techniques of blacksmithing and forging as they can be applied to the design of contemporary jewelry and metal forms.

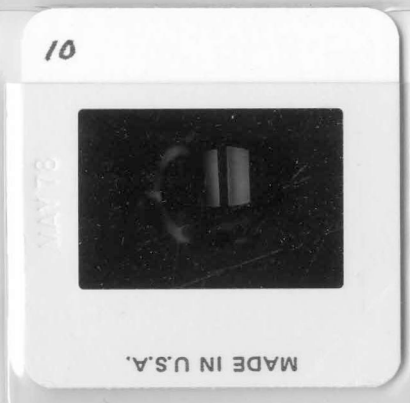
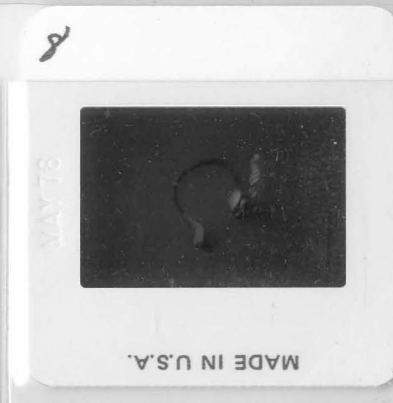
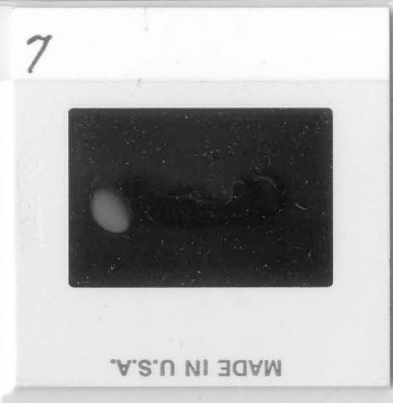
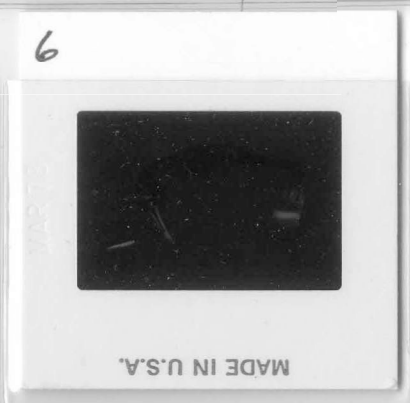
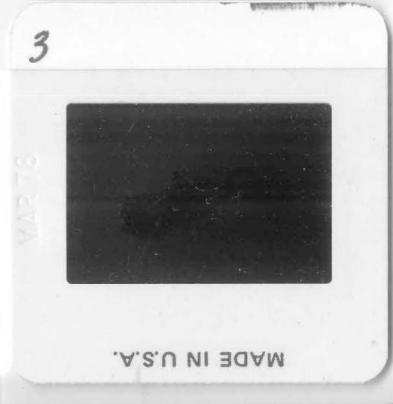
There is an excitement in utilizing contrasts in material, steel and copper against the richness of colored silk, ivory and fine silver. These are symbols of utility and durability, hard and cold, juxtaposed against symbols of elegance and fragility, soft, colorful and richly lustrous.

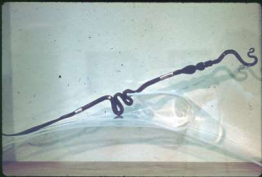
The formal aspects of lines drawn in space represent paths of movement, rhythm and form. Asymmetry produces visual tension and linear involvement which surrounds and encloses space, creating negative areas that play against one another.

I have combined these elements, and by limiting my materials and techniques, explored and expanded the artistic possibilities within a small area of metalsmithing.

## SLIDES

1. Picnic Fork      Steel, fine silver and copper
2. Shoulder Fibula      Copper and sterling silver
3. Shoulder Fibula      View 2
4. Neckpiece I      Copper and sterling silver
5. Neckpiece II      Mild steel and silk
6. Neckpiece III      Copper and silk
7. Knife I      High carbon steel, ivory and fine silver
8. Anklet      Copper, ivory and silk
9. Bracelet      Copper and silk
10. Bracelet      View 2
11. Fibula I      Steel, ivory and silk
12. Fibula II      Steel and silk
13. Knife II      High carbon steel, ivory and fine silver
14. Bacchanalian  
Mask Flask      Sterling silver, steel and silk
15. Bacchanalian  
Mask Flask      View 2
16. Knife III      High carbon steel and sterling silver
17. Neckpiece IV      Copper and silk
18. Headpiece      Steel, cotton and silk
19. Waistlet I      Steel and silk
20. Waistlet II      Copper and silk











































MONTANA STATE UNIVERSITY LIBRARIES



3 1762 10015097 6

~~MSU  
N.S.  
28~~