



Saga of the flaming pickle  
by Audra Leah Oliver

A thesis submitted to the Graduate Faculty in partial fulfillment of the requirements for the degree of  
MASTER OF APPLIED ART  
Montana State University  
© Copyright by Audra Leah Oliver (1973)

Abstract:  
no abstract found in this volume

In presenting this thesis in partial fulfillment of the requirements for an advanced degree at Montana State University, I agree that the Library shall make it freely available for inspection. I further agree that permission for extensive copying of this thesis for scholarly purposes may be granted by my major professor, or, in his absence, by the Director of Libraries. It is understood that any copying or publication of this thesis for financial gain shall not be allowed without my written permission.

Signature ANDREA OLIVER

Date May 23, 1973

SAGA OF THE FLAMING PICKLE

by

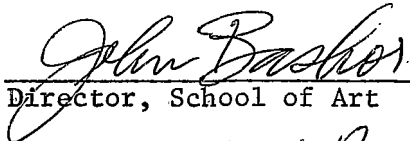
Audra Leah Oliver


A thesis submitted to the Graduate Faculty in partial  
fulfillment of the requirements for the degree


of

MASTER OF APPLIED ART

Approved:

  
Director, School of Art

  
Chairman, Examining Committee

  
Graduate Dean

MONTANA STATE UNIVERSITY  
Bozeman, Montana

June, 1973

## ACKNOWLEDGEMENT

I wish to thank the following persons for assisting with the manual labor during the harried days which inevitably preceeded each of my shows: Susan Fritz Peed, Michael Peed, Connie Lewis, Bruce Metcalf, Sage Sigerson, and Charles Hanton. I also wish to extend my thanks to my committee for the assistance given.

## ARTIST'S STATEMENT

The work in my thesis has evolved as a statement about woman and the role assigned to her in contemporary American society. This work represents a rebellion against conventional media, traditional media being significantly subject to standards established primarily by and for men. The need to physically explore the pieces and their tactile qualities asks people to use basic senses rather than the traditional aesthetic judgment and highly intellectual senses frequently associated with the establishment.

I have used the materials and methods traditionally associated with the housewife in an attempt to elevate these means and methods and heighten the awareness of them in the artistic community.

1. Portrait of the Artist as a Bride.
2. Landscape Pillow
3. World on a Suitcase #1
4. World on a Suitcase #2
5. World on a Suitcase #3
6. Blue Valentine
7. Crazy Valentine
8. Apple of my Eye, exterior
9. Apple of my Eye, interior
10. Hot Dog Valentine, exterior
11. Hot Dog Valentine, interior
12. Everybody's Baby and Room
13. Dessert Plates
14. Cow Plate #1
15. Cow Plate #3
16. Cow Plate #2
17. Sheep Plate #1
18. Sheep Plate #2
19. Sheep Plate #3

World on A #1  
Suitcase



Fabric Applique,  
trapunto)

16" x 19" x 31"

Audra Oliver '73

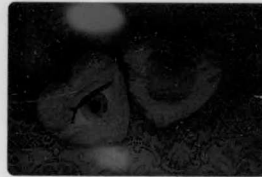
Audra Oliver



Portrait of the  
Artist as a Bride

Flesh & Fabric  
5 1/2" x 8" diam.

Apple of my eye  
inside



COLOR  
TRANSPARENCY

Audra Oliver '73

Sheep plate #3  
8 1/4" dia



low fire ceramics  
Audra Oliver '73

World on A #2  
Suitcase



Fabric Applique,  
trapunto)

16" x 19" x 31"

Audra Oliver '73

Every body's Baby's  
Room 17" x 82"



Fabric - QUILTED  
STUFFED AUDRA OLIVER '73

Audra Oliver

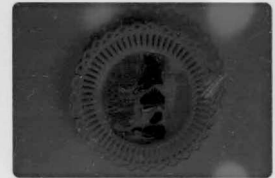
Blue Valentine  
9 1/2" x 9 1/2"



Fabric (trapunto,  
embroidery)

Audra Oliver '73

Cow Plate #1  
Ceramic low fire



8 1/4" dia.  
Audra Oliver

World on A  
Suitcase #3

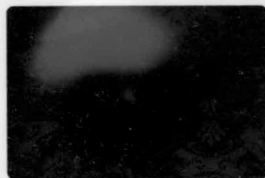


Fabric Applique,  
trapunto)

16" x 19" x 31"

Audra Oliver

Apple of my eye.  
9 1/2" x 9"



Fabric (Trapunto +  
embroidery)  
Audra Oliver '73

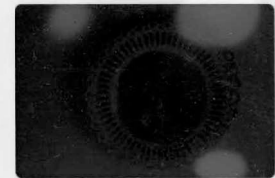
Audra Oliver '73

Dessert Plates



ceramic - set of 5  
5 1/2" x 6 1/2" each

Cow Plate #2  
Ceramic low fire



8 1/4" dia.  
Audra Oliver '73

LANDSCAPE  
PILLOW



Fabric Applique,  
embroidery, trap  
unto)

14" x 16"

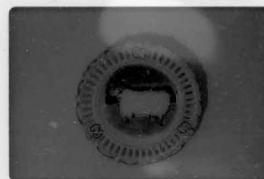
Audra Oliver '73

Crazy Valentine  
Audra Oliver '73 6" dia



Fabric (quilting  
+ embroidery)

Sheep plate #1  
low fire ceramics



7" diameter  
Audra Oliver '73

Cow Plate #3  
AUDRA OLIVER



Ceramic - low fire  
8 1/4" diameter

Hot Dog Valentine  
inside



COLOR  
TRANSPARENCY

Audra Oliver '73

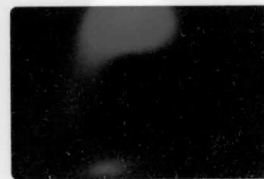
Audra Oliver '73

Hot Dog Valentine  
14" x 14"



Fabric (Embroidery  
+ stuffing)

Sheep plate #2  
low fire ceramics



7" dia  
Audra Oliver '73













HOT DOG!



BE

MY

VALENTINE?































