



Estimates of regional annual abundance and population growth rates of white sharks off central California

Paul E. Kanive^{a,b,*}, Jay J. Rotella^a, Taylor K. Chapple^{c,d}, Scot D. Anderson^b, Timothy D. White^c, Barbara A. Block^c, Salvador J. Jorgensen^{b,e}

^a P.O. Box 173460, Montana State University, Bozeman, MT 59717, USA

^b 886 Cannery Row, Monterey Bay Aquarium, Monterey, CA 93940, USA

^c 120 Ocean View Blvd, Pacific Grove, Hopkins Marine Station, Stanford University, CA 93950, USA

^d 2030 SE Marine Science Drive, Coastal Oregon Marine Experiment Station, Oregon State University, Corvallis, OR 97365, USA

^e University of California, Santa Cruz, Institute of Marine Sciences, Santa Cruz, CA 95064, USA

ARTICLE INFO

Keywords:

Abundance
Population trend
Mark-recapture
White shark
California

ABSTRACT

Determining population trends is critical for evaluating management actions and prioritizing species protections. In this study, we used empirical data to produce an estimate of the population trend for sub-adult and adult white sharks in central California. We used the unique dorsal fin morphology to build a mark-recapture data set in a modified Jolly-Seber model (POPAN formulation) to estimate annual abundance and then investigate population growth rates using parametric bootstrapping methods for sub-adult and adult sharks (males and females). For all demographic groups combined, we found equivocal evidence for a positive regional population growth ($\lambda = 1.07$ (95% CI = 0.91 to 1.23)). However, sex- and size-specific population growth rate estimates provided some evidence of population increases for reproductively mature males ($\lambda = 1.06$ (95% CI = 0.99 to 1.13)) and females ($\lambda = 1.06$ (95% CI = 0.95 to 1.17)). For sub-adult male and female white sharks, point estimates of λ were positive but uncertainty prevents strong inference ($\lambda = 1.07$ (95% CI = 0.85 to 1.29)) and ($\lambda = 1.08$ (95% CI = 0.88 to 1.28)), respectively. Our findings of a potential increase in reproductive-aged white sharks in central California may be a result of regional fluxes in density or attributed in part to current protection efforts and subsequent increase in abundance of pinnipeds as well as reduced gill-net fisheries mortality of juveniles. A trend estimate for the entire northeastern Pacific will require obtaining similar data across known aggregation areas along the west coast of North America.

1. Introduction

Determining whether the number of individuals in a population is increasing, decreasing or stable over time is a central goal for assessing the status of wildlife populations (Williams et al., 2002). However, population trends can be difficult to estimate because long-term monitoring is required, especially for long-lived species. In marine systems, where observations beneath the sea surface are challenging, assessing non-target species remains problematic (Hilborn and Walters, 1992; Pope et al., 2000). This is even more so for large, highly mobile species with extensive home ranges and relatively low abundance. As a result, ~20% of marine vertebrates globally remain in the 'Data Deficient' assessment category under the International Union for Conservation of

Nature (IUCN, 2019).

While catch data is traditionally used in marine fisheries to assess populations, the proliferation of high-quality and low-cost photographic and video technologies, along with pattern recognition techniques, has increased opportunities to assess more cryptic species through photo identification mark recapture (Drechsler et al., 2015). Simultaneously, the increasing accessibility of genetic (Miller et al., 2005) and electronic biologging data (Dudgeon et al., 2015) is helping define the relevant geographic scope of populations targeted for assessment using image-based mark recapture.

Elasmobranchs are a taxa of conservation concern due to intrinsically low reproductive rates and vulnerability to direct and indirect fishing mortality, which has decimated many populations (Myers et al., 2007;

* Corresponding author at: 3600 Honeysuckle Dr., Belgrade, MT 59714, USA.

E-mail addresses: paul.kanive@montana.edu (P.E. Kanive), rotella@montana.edu (J.J. Rotella), taylor.chapple@oregonstate.edu (T.K. Chapple), timwhite@globalfishingwatch.org (T.D. White), bblock@stanford.edu (B.A. Block), salvador.jorgensen@gmail.com (S.J. Jorgensen).

<https://doi.org/10.1016/j.biocon.2021.109104>

Received 30 September 2020; Received in revised form 5 February 2021; Accepted 23 March 2021

Available online 21 April 2021

0006-3207/© 2021 The Author(s). Published by Elsevier Ltd. This is an open access article under the CC BY license (<http://creativecommons.org/licenses/by/4.0/>).

Worm et al., 2013) and numerous species lack robust population assessments due to insufficient data (Dulvy et al., 2008; Queiroz et al., 2019). However, many shark and ray species possess morphological (Holmberg et al., 2009; Tienhoven et al., 2007), behavioral (Barnett et al., 2011; Kneebone et al., 2012) and life history traits (Cortés, 2000) that are particularly suited for assessment using photo identification mark-recapture.

White sharks (*Carcharodon carcharias*) are a circumglobally distributed marine top predator currently listed as Vulnerable on the IUCN Red List of Threatened Species (IUCN, 2019). Electronic tagging studies indicate migratory behavior on the scale of ocean basins but high site fidelity in which individuals aggregate repeatedly in predictable coastal locations (Bruce et al., 2006; Domeier and Nasby-Lucas, 2008; Jorgensen et al., 2010; Skomal et al., 2017; Weng et al., 2007). Genetic evidence suggests natal philopatry (Jorgensen et al., 2010) resulting in discrete population structure, with clearly defined population segments such as South Africa (Pardini et al., 2000), Australia-New Zealand (Blower et al., 2012), northeast Pacific (Jorgensen et al., 2010) northwest Pacific (Tanaka et al., 2011), Mediterranean (Gubili et al., 2010) and northwest Atlantic (O'Leary et al., 2015).

The northeast Pacific population of sub-adult and adult individuals (hereafter called white sharks) primarily ranges from aggregations in Guadalupe Island, Mexico (Domeier and Nasby-Lucas, 2008) and central California, USA out to the north Pacific subtropical gyre ('White Shark Café') (Jorgensen et al., 2010; Weng et al., 2007). Additional aggregation areas may exist but to date none have been described in the north Pacific. In central California, a predictable migratory pattern reflects high fidelity for both sexes to the region and white shark individuals can be identified by a unique pattern of notches on the trailing edge of the dorsal fin that does not change significantly through time (Anderson et al., 2011). Taken together, these attributes have led to multiple mark-recapture studies to estimate essential population parameters (Chapple et al., 2011, 2016; Kanive et al., 2015, 2019).

An initial photo ID based estimate of abundance for white sharks off central California from a three-year study estimated 219 individuals (95% credible intervals, 130–275) (Chapple et al., 2011). That study provided a proof of concept for photographic mark-recapture as a viable population assessment tool for white sharks, however no baseline value pre-dated this estimate so no temporal trend could be inferred. White shark populations have a low resilience to mortality (Chapple and Botsford, 2013) and have been protected since 1994 in California waters (Heneman and Glazer, 1996). In addition, pinniped populations in North America have increased (Boeuf and Laws, 1994; Laake et al., 2018) following the Marine Mammal Protection Act (1972) potentially influencing white shark population growth as pinnipeds are a preferred prey source while white sharks are coastal. Furthermore, policy measures such as banning the use of gillnets within 4.83 km (three miles) of the California coast (California proposition 132, 1990) may be benefitting white sharks by reducing incidental mortality of juveniles (Benson et al., 2018; Lowe et al., 2012). Therefore, we hypothesize that sub-adult and adult white sharks may have experienced a recent positive population growth.

To test this, we estimated the abundance and population growth rates of a regional sub-population of white sharks in central California (hereafter simplified as 'population') using 8 years of data from all 3 known aggregation sites. We tested competing models within a Jolly-Seber mark-recapture framework, based on size and sex-specific demographic assumptions derived from previous work (Chapple et al., 2016; Kanive et al., 2015, 2019) to estimate annual abundance and determine whether there have been changes in the population size over time. This was done for the overall population, and across demographic groups (based on sex and maturity) within the sampled population.

2. Materials and methods

2.1. Data collection

From 2011 to 2018, we sampled at known white shark aggregation sites (Southeast Farallon Island, Año Nuevo Island, and Tomales Point) along the central coast of California, USA (Fig. 1) during periods of peak coastal residency (September–February; Klimley, 1985; Jorgensen et al., 2010). We pooled data from the three sites given their proximity (<150 km; total study area = ~1500 km²) and the species' mobility.

White sharks were attracted to a research boat using a seal decoy and a localized scent of marine mammal (Kanive et al., 2015). Individual sharks were identified from photographs and video images of the unique patterns on the trailing edge of their dorsal fin. The dorsal fins of white sharks have unique trailing edge markings shown to be stable for >22 years (Anderson et al., 2011), establishing these morphological differences as a reliable means of identifying individuals. This methodology has been used in previous population studies of white sharks (Chapple et al., 2016, 2011; Towner et al., 2013; Kanive et al., 2015, 2019). To estimate abundance, we used seasonal sighting records of all sampled individuals to generate mark-recapture encounter histories.

We determined sex by unambiguous confirmation of presence (male) or absence (female) of claspers using underwater video. In this study, because sex assignment was imperfect, some sharks remained unsexed throughout the study and were thus classified as "unknown sex". To deal with this uncertainty, we used the program LOLASURVIV (Nichols et al., 2004) to estimate the sex ratio of the sample population. Unsexed individual sharks were then randomly assigned to sex based on the estimate of the sex ratio from the LOLASURVIV analysis. Multiple iterations of random assignment in the dataset were run against the model suite to check for sensitivity of the resulting annual abundance estimates. Data used to estimate sex ratio extended from 2006 to 2018 (<https://zenodo.org/record/4022914#.X2IxTGdKjOR>).

Total body length was estimated as the shark swam near a vessel of known size and maturity was assigned based on published values (adult males ≥380 cm, sub-adult males < 380 cm, adult females ≥440 cm, and sub-adult females < 440 cm based on Pratt (1996) and Francis (1996), respectively). These length-based classifications resulted in four groups: adult males and females, sub-adult males and females.

2.2. Jolly-Seber abundance estimation

To estimate annual abundance of the four groups, we constructed Jolly-Seber (Jolly, 1965; Seber, 1965) open mark-recapture models using the POPAN (Schwarz and Arnason, 1996) formulation in Program MARK (White and Burnham, 1999). We implemented MARK using the RMark package (Laake, 2013) in the R software environment (R Core Team, 2018). The POPAN parameterization includes:

ϕ_i = probability of apparent survival from year i to $i + 1$,

p_i = probability of capture (observation) on occasion i ,

N_{super} = super-population consisting of all sharks that were alive and available for detection at some point during the sampling periods of the study,

β_i = probability that a shark from the super-population, N_{super} , would enter the population between occasion i and $i + 1$.

Jolly-Seber models use information from the number of unmarked individuals observed on each sampling occasion and assume that unmarked animals have the same capture probabilities as marked animals, which allows for the estimation of abundance (Schwarz and Arnason, 1996). We analyzed data from 2011 through 2018 when sharks at all three sampling sites were consistently sampled. Assumptions for this model include: (1) sharks retain their fin pattern throughout the study and are recorded and matched properly, (2) sampling is instantaneous (or realistically conducted over a short time), (3) survival probabilities

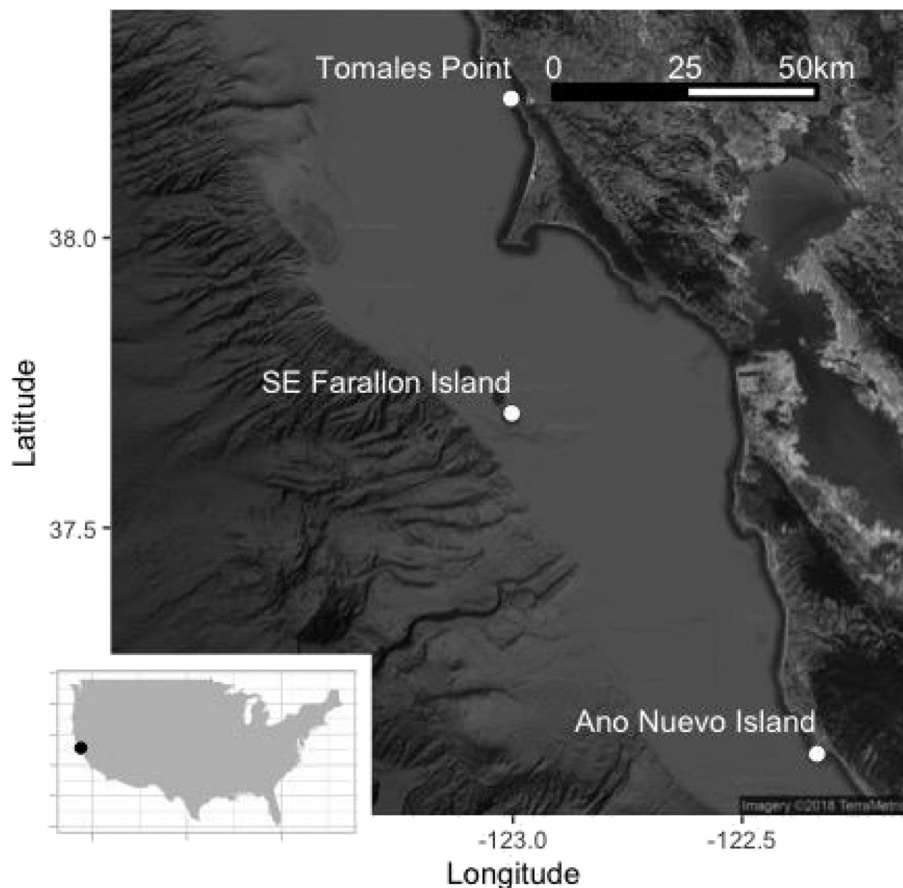


Fig. 1. Map of the United States of America with the locations of the 3 sampling sites off central California.

are the same for marked and unmarked sharks between each sampling occasion (homogeneous survival), (4) catchability is the same for marked and unmarked sharks (homogeneous catchability), (5) the study area remains constant throughout the study period, and (6) any temporary emigration is random (Kendall et al., 1997) based on previous work with this dataset that assessed random versus Markovian temporary emigration (Chapple et al., 2016; Kanive et al., 2015).

Multiple combinations of model structures for φ , p , and β were tested, and the super-population size (N_{super}) was estimated for each group in each model. Following evidence that φ increases significantly with total length (Kanive et al., 2019), we allowed φ to vary by maturity (mat) where adult males and females were pooled and sub-adult males and females were pooled or allowed to vary by maturity and time via an interaction ($mat*t$). For capture probability, p , we assessed the effects of sex, effort, time (t), group (g), as well as the following combinations: $sex*effort$, $sex*t$, $g*t$. We also defined group effects where p for sub-adult males and females was constrained to be the same but p for adults was allowed to vary by sex and year via an interaction [$((subs(.)ads(sex))*t)$] or held constant across years [$(subs(.)ads(sex))$]. An alternative model structure for p was also considered in which p for sub-adult males and females was allowed to vary by sex while the rate for adult males and females was constrained to be the same but either (a) allowed to interact with year [$((subs(sex)ads(.))*t)$] or (b) was held constant across years [$(subs(sex)ads(.))$]. For models where p , β , and φ were all allowed to vary over time, not all parameters in the model were estimable (Schwarz and Arnason, 1996). Therefore, for models where p and β were both time variant, the first and second capture probabilities were constrained to be equal for sharks of each sex ($p_1 = p_2$) and other capture probabilities were allowed to vary. To eliminate inestimable parameters in models where p and φ were both time variant, the last two capture probabilities were constrained to be equal for sharks of each sex (in this case $p_7 = p_8$)

and other capture probabilities to vary. Probability of entry, β , was allowed to differ by group and was either held constant over time (g), allowed to vary independently over time in each group ($g*t$), or to vary by maturity class while either being held constant over time (mat) or allowed to vary independently over time in each maturity class ($mat*t$). The initial β , (β_0), was derived from subtraction ($\beta_0 = 1 - \beta_1 - \beta_2 - \dots - \beta_7$) representing the estimated proportion of the superpopulation present before sampling occurs. Finally, N_{super} was estimated for each group (g) for every model. The models were fitted using the logit-link function for φ and p , the log-link function for N_{super} , and the multinomial-link for β to constrain the set of parameters to have a sum that was ≤ 1.00 (Schwarz and Arnason, 1996; Williams et al., 2002). We considered models that contained all-possible combinations of parameterizations for each of the parameters, which yielded 88 different competing models. Model selection was based on Akaike's Information Criterion for small sample sizes (AICc) (Burnham and Anderson, 2002). Given issues of model selection uncertainty, we also used model averaging to obtain estimates for parameters of interest (Burnham and Anderson, 2002).

We derived the number of new animals (B_t) that joined the superpopulation during each year and the size of the annual population sizes (N_t) using standard methods for POPAN results (Schwarz and Arnason, 1996). To estimate total abundance for each year, we summed the group abundances for and quantified uncertainty using the delta method (Powell, 2007).

2.3. Population growth rate calculation

To obtain estimates of population growth rates (λ), we used parametric bootstrapping (Buckland and Garthwaite, 1991; Efron and Tibshirani, 1986) using the derived abundance estimates and associated variance from the top model and model averaged results for each of the

four groups of white sharks. Specifically, we generated 5000 random samples of annual abundance (N_t) for each group, for each year. Population growth rates (λ) were then calculated using the 5000 randomly generated estimates of annual abundance for each group from the top model. Specifically, from 2011 to 2018, we estimated λ by dividing subsequent abundance estimates (i.e. N_{2012}/N_{2011} , N_{2013}/N_{2012} , ..., N_{2018}/N_{2017}) yielding seven inter-annual estimated λ 's representing the growth rate from one time step (year) to the next. For each of the 5000 sets of 7 estimated inter-annual λ 's, we estimated a geometric mean λ that accounts for temporal variation in rates of annual population growth (Cooch and White, 2019; Lewontin and Cohen, 1969). These geometric means yielded approximately normal distributions and allowed us to calculate 95% confidence intervals for each group's estimated geometric mean.

3. Results

3.1. Data summary

During the sampling seasons from 2011 to 2018, we logged 2587 h attracting White sharks to research vessels at Southeast Farallon Island (478 h), Año Nuevo Island (755 h) and Tomales Point (1354 h). A total of 419 individual White sharks (241 male; 147 female; 31 unknown) ranging from 200 to 550 cm total length (mean = 390 cm, SE = 3.71) were identified (<https://zenodo.org/record/4022914#.X2lxTGdKjOR>). Unique fin identifications were logged from 1533 images. The observed sex ratio of the sample population was 1.6 males per female. The number of unique and resights per unit effort is summarized in Table 1.

Of the sample population of 419 white sharks, 388 (241 males, 147 females) were confirmed to be either male or female at some point in the study period and 31 sharks remained unsexed. From the LOLASURVIV model (Supplementary materials S1), the proportion of males in the sample population was estimated to be 0.60 (SE = 0.02). Therefore, for this sample population to equate to 0.60 male, we randomly assigned 10 of 31 unsexed sharks to male and 21 as female resulting in 251 males (144 adults, 107 sub-adults) and 168 females (71 adults, 97 sub-adults) (Fig. 2).

3.2. Model results

Our best-supported model among a suite of 88 models had an AICc score with a difference of 2.63 units from the next best model and carried 54% of the AICc weight. The second and third best-supported models each carried 14% of the AICc weight (Table 2). Given the resulting model-selection uncertainty, we report the parameter estimates from the top model alongside model-averaged results obtained from all models that received any model weight (Table 2) (Burnham and Anderson, 2002). In the best-supported model, φ differed by maturity class but not by year and was estimated as 0.70 (SE = 0.03) for sub-adults and 0.85 (SE = 0.02) for adults. In the best-supported model, p was allowed to vary by sex in the mature class, but held constant by sex for sub-adults, and allowed to vary by year [((subs.)ads(sex)) * time]. Time-varying estimates of p ranged from 0.21 (SE = 0.08) to 0.66 (SE = 0.08) for sub-adult sharks (both sexes), from 0.25 (SE = 0.05) to 0.87 (SE = 0.13) for adult males, and 0.17 (SE = 0.06) to 0.44 (SE = 0.12) for

adult females. Estimated annual probability of entry into the population, β_i was best estimated as being different by maturity class but constant over time was 0.09 (SE = 0.01) for adults and 0.10 (SE = 0.01) for sub-adults. The probability of being present at the start of the study, β_0 , was 0.34 (SE = 0.06) for adults and 0.28 (SE = 0.08) for sub-adults. The super-population (N_{super}) for each group based on results from the best-supported model was 161.15 (SE = 13.56) for sub-adult males, 146.04 (SE = 12.57) for sub-adult females, 177.57 (SE = 7.99) for adult males, and 114.01 (SE = 12.50) for adult females.

3.3. Annual abundance estimates

Derived annual abundance estimates from our top model increased from 2011 to 2018 for each group. Estimates increased from 45.35 (SE = 15.27) to 54.58 (SE = 7.11) for sub-adult males, 41.10 (SE = 13.86) to 49.46 (SE = 6.50) for sub-adult females, 59.64 (SE = 9.85) to 95.93 (SE = 10.52) for adult males, and 38.29 (SE = 7.75) to 61.59 (SE = 8.69) for adult females (Fig. 3) over the study period. Model-averaged seasonal estimates of abundance also increased from 2011 to 2018 in each group. Model-averaged estimates increased from 40.96 (SE = 20.62) to 56.63 (SE = 9.47) for sub-adult males, 36.73 (SE = 15.92) to 56.12 (SE = 13.08) for sub-adult females, 61.38 (SE = 12.08) to 94.39 (SE = 10.89) for adult males, and 41.18 (SE = 12.00) to 58.91 (SE = 9.20) for adult females (Fig. 3).

Seasonal total abundance estimates summed over all groups of sub-adult and adult male and female White sharks in our study area provided some evidence that overall abundance increased over the study (Fig. 3). Estimates from the top model increased from 184.38 (SE = 33.42) in 2011 to 261.56 (SE = 21.42) in 2018. Similarly, model-averaged values increased from 180.25 (SE = 38.29) in 2011 to 266.05 (SE = 24.35) in 2018. Results were consistent for three versions of the dataset each with different random sex assignments for the 31 individuals of unknown sex. Across demographic groups, resulting estimates of annual abundance were within the 95% CI's of the presented results. Given the relatively small number of unknowns (7.4%), the modest influence of the assignment of unknowns is perhaps not surprising.

3.4. Estimates of population growth rate ($\hat{\lambda}$)

Estimates of overall geometric mean $\hat{\lambda}$ and associated quantiles from the top model and from model averaging were calculated from empirical bootstrap distributions as 1.05 (95% C.I. = 0.91–1.16) and 1.07 (95% C. I. = 0.91–1.23) respectively. Of the 5000 bootstrap estimates generated for $\hat{\lambda}$ for the overall shark population, 83.4% of values from the best-supported and 83.5% of values from model averaging were >1.00 . Taken as a whole, the bootstrap results provide evidence that the population's stochastic growth rate, as measured by geometric mean $\hat{\lambda}$ was adequate for population growth over the study period. However, the uncertainty associated with the estimates does not rule out other possibilities.

Group-specific estimates of geometric mean $\hat{\lambda}$ from the top model provide strong evidence that adult males and females had a stochastic growth rate >1.00 (98.8% of estimates of bootstrapped values were >1.00 for each sex) indicating an increase in abundance over the study

Table 1
Summary of sharks identified in our central California study area over the study period.

Year	2011	2012	2013	2014	2015	2016	2017	2018
# individual sharks	85	82	88	77	117	87	148	92
# new sharks	85	56	43	36	49	34	74	42
# sharks resighted	NA	26	45	41	68	53	74	50
Resight %	NA	0.32	0.51	0.53	0.58	0.61	0.50	0.54
Effort (hrs)	408	469	361	225	352	218	329	223
Individual sharks/h	0.21	0.17	0.24	0.34	0.33	0.40	0.45	0.41

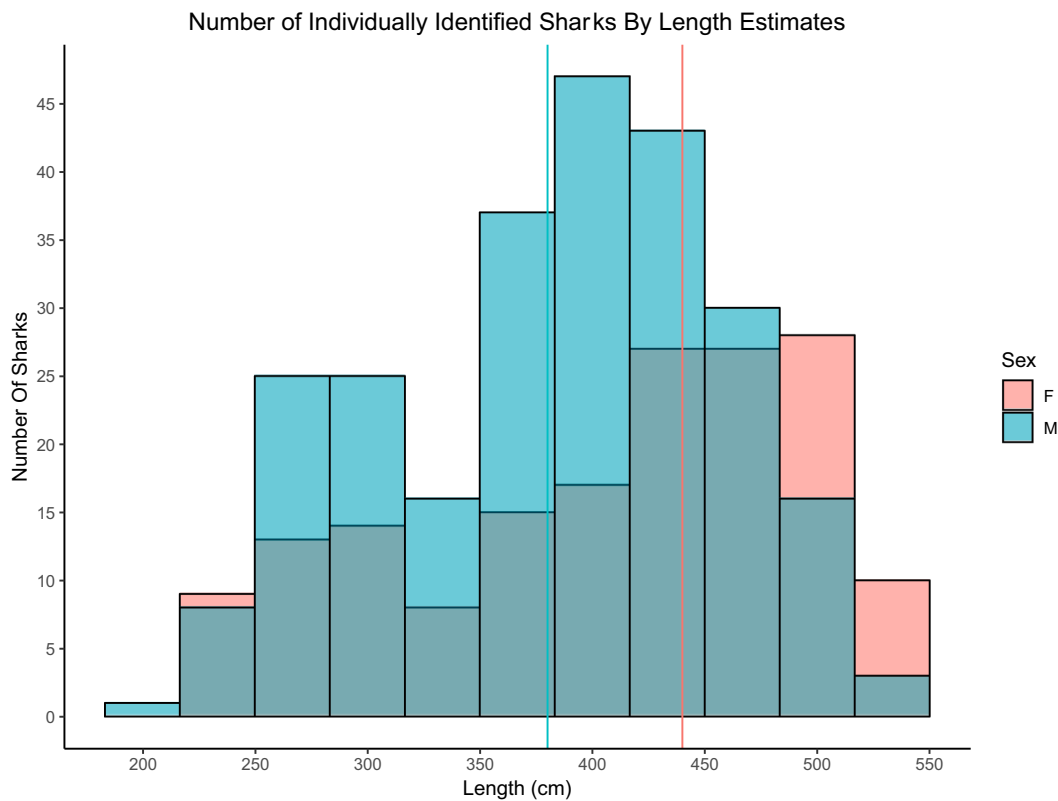


Fig. 2. Histogram detailing the number of individually identified sharks with associated total length estimation and sex over the course of the 8-year study period. The vertical lines represent the estimated length at which males (in blue) and females (in red) transition from sub-adult to adult. (For interpretation of the references to colour in this figure legend, the reader is referred to the web version of this article.)

Table 2

Model suite with Akaike weights >0.01 where K is the number of parameters estimated in the model, $AICc$ is the Akaike Information Criterion score corrected for small sample size, $\Delta AICc$ is the difference in the $AICc$ values from the top model, and w_i are the calculated Akaike weights. Parameters are defined as follows: φ (apparent survival), p (capture probability), β (entry probability), and N (super-population). Notation for parameters is as follows: (mat) – time invariant, adults and sub-adults allowed to vary, (g) – time invariant, each demographic (group) allowed to vary, (sex*t) – time variant, sexes allowed to vary, (g*t) – time variant, each demographic (group) allowed to vary, (mat*t) – time variant, adults and sub-adults allowed to vary, [((subs(.).ads(sex))*t)] – time variant, sub-adults grouped, adults vary by sex.

Model	K	AICc	$\Delta AICc$	w_i
$\varphi(\text{mat}) p[\text{((subs(.).ads(sex))*t)}] \beta(\text{mat}) N(\text{g})$	32	1703.25	0.00	0.53
$\varphi(\text{mat}) p[\text{((subs(.).ads(sex))*t)}] \beta(\text{g}) N(\text{g})$	34	1705.88	2.63	0.14
$\varphi(\text{mat}) p(\text{sex}*t) \beta(\text{mat}) N(\text{g})$	24	1705.98	2.73	0.14
$\varphi(\text{mat}) p(\text{g}*t) \beta(\text{mat}) N(\text{g})$	40	1707.69	4.44	0.06
$\varphi(\text{mat}) p(\text{sex}*t.\text{pool}) \beta(\text{mat}*t) N(\text{g})$	34	1708.17	4.92	0.05
$\varphi(\text{mat}) p(\text{sex}*t) \beta(\text{g}) N(\text{g})$	26	1708.29	5.04	0.04
$\varphi(\text{mat}) p[\text{((subs(.).ads(sex))*t)}] \beta(\text{mat}*t) N(\text{g})$	41	1708.68	5.43	0.04

period. In contrast, results for sub-adults from the top model were more equivocal (68.5% and 68.6% of values for sub-adult males and females, respectively, were >1.00) (Fig. 4). Annual geometric mean estimates for each group from top model were calculated as 1.07 (95% C.I. = 1.01 to 1.13) for adult males, 1.07 (95% C.I. = 1.00 to 1.15) for adult females, 1.04 (95% C.I. = 0.90 to 1.17) for sub-adult males, and 1.04 (95% C.I. = 0.90 to 1.17) for sub-adult females.

Model-averaged results were similar to those from the top model but slightly more uncertain (96.1% and 87.0% of estimates of bootstrapped values were >1.00 for adult males and females, respectively). For sub-adults, results from model-averaging provided slightly more evidence than results from the top model that the stochastic growth rate was

>1.00 ; however, results from both had notable levels of uncertainty (71.4% and 78.3% of estimates of bootstrapped values were >1.00 for sub-adult males and females, respectively). Annual geometric mean estimates based on results from model averaging were 1.06 (95% C.I. = 0.99 to 1.13) for adult males, 1.06 (95% C.I. = 0.95 to 1.17) for adult females, 1.07 (95% C.I. = 0.85 to 1.29) for sub-adult males, and 1.08 (95% C.I. = 0.88 to 1.28) for sub-adult females. Consequently, we found considerable evidence for positive population growth in adult males and females during the 8-year study period and more equivocal evidence for positive population growth among sub-adult males and females, although a stable population growth rate can be conservatively inferred for all groups.

4. Discussion

Using visual mark-recapture techniques based on dorsal fin morphology, we estimated the regional abundance over eight years for sub-adult and adult white sharks that seasonally aggregate off central California. Importantly, our results are indicative of a relatively small group of white sharks (<300 individuals) along with evidence that the adult demographic appears to be stable or slightly increasing (see Fig. 3); however, the possibility of decline cannot be definitively ruled out. Our analysis of separate demographic classes suggests a potential modest increase in the abundance of adults (male and female) yet an equivocal estimate for sub-adults (also both male and females) (Table 3). These findings represent the first empirical estimate of population trend of white sharks in central California.

Importantly, the abundance estimates and inferences of this study are specific to the region of central California encompassing the three primary aggregation sites sampled (Fig. 1). However, electronic tagging data have shown sharks tagged within our study area move to, and return from, coastal areas both to the north and south of the study area

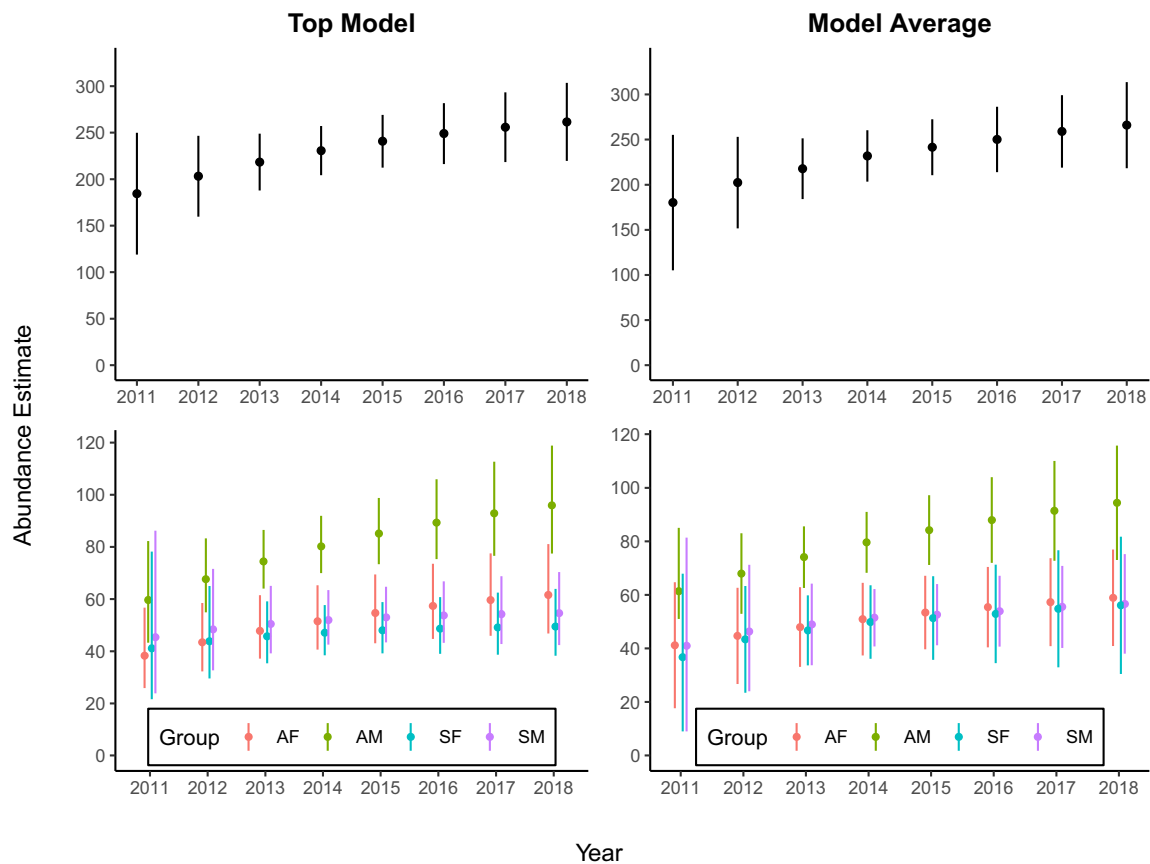


Fig. 3. Annual abundance estimates of white shark (*Carcharodon carcharias*) off central California with 95% confidence intervals for all demographic groups combined (black), and each separate group (colored) for results from the top model and from model-averaged results from all POPAN models. (For interpretation of the references to colour in this figure legend, the reader is referred to the web version of this article.)

from Mexico to Washington state (Block et al., 2011; Jorgensen et al., 2010). Additionally, opportunistic dorsal fin photographs of white sharks taken outside the study area including Hawaii, Mexico and throughout California, have been matched to white sharks identified in central California. The hypothesis that the central California white shark population may comprise a substantial proportion of 'transient' individuals (Burgess et al., 2014) has been robustly ruled out (Kanive et al., 2019) based on empirical data testing (Pradel et al., 1997). Whether this potential regional increase of reproductive-age white sharks in central California is representative of an overall increase in the total northeastern Pacific white shark population (Jorgensen et al., 2010) or a result of regional fluxes in density remains to be determined. A trend estimate for the entire northeastern Pacific will require integration of data across their known aggregation areas along the west coast of North America.

Although our results contain uncertainty as outlined above, there are two key protections that may have contributed to the success of white sharks in central California. First, white sharks were first protected in California waters in 1994 and federally in 2004 (CITES, appendix ii), and bans on coastal gillnetting in 1990 (California Proposition 132) likely reduced early incidental mortality of juveniles. Secondly, pinnipeds, their main prey, were protected under the Marine Mammal Protection Act in 1972 and have greatly increased in abundance since (Boeuf and Laws, 1994; Laake et al., 2018; Lowry, 2014). Taken together, these protections may influence the prospect for population increase of this important marine predator.

Our findings provide evidence that mature individuals may be increasing in this region, while the probability of an increase in sub-adults remains less clear. Ancillary information from increased sightings of YOY and juvenile sharks (Lowe et al., 2012) and an increase in

sea otter mortality due to white shark bites (Tinker et al., 2016) likely inflicted by both adults and juveniles (Moxley et al., 2019), provide support to our findings. An increase in incidental fisheries landings of juvenile white sharks between the mid 1990's and 2008, following the 1994 California near shore gill net ban has frequently been cited as evidence of population increase (Lowe et al., 2012). However, this potential abundance index, which depends on consistent reporting by fishers, fell to zero for many years following the 2012 petitions for this segment of the white shark population listing under the Endangered Species Act. Public reports of juvenile white sharks sightings in California have also increased substantially in recent years, but the number of sightings has been highly variable in magnitude and location year-to-year, and has been linked to climatic changes in optimal temperature habitat across their latitudinal range (Tanaka et al., 2021; White et al., 2019). These observations suggest a possible increase in the abundance of white sharks in the juvenile size class, smaller than the sizes sampled in this study area. However, distributional changes, climate variation, effort consistency, social media, and fisheries reporting accuracy are confounding factors that need to be resolved before firm conclusions can be made.

Among adults and sub-adults, length-based apparent survival rate estimates show that adults have a substantially higher probability of surviving and reusing sites in the study area (Kanive et al., 2019). The 'apparent' term means that mortality is confounded with potential permanent emigration, where the animal is alive and leaves the study area for the remainder of the study period. As sub-adults recruit to prime foraging grounds occupied by adults, intraspecific competition could force out smaller, less competitive individuals (Kanive et al., 2019). It is therefore possible these sub-adult sharks are actually alive but dispersed outside of the prime hunting grounds of our study area. Future research

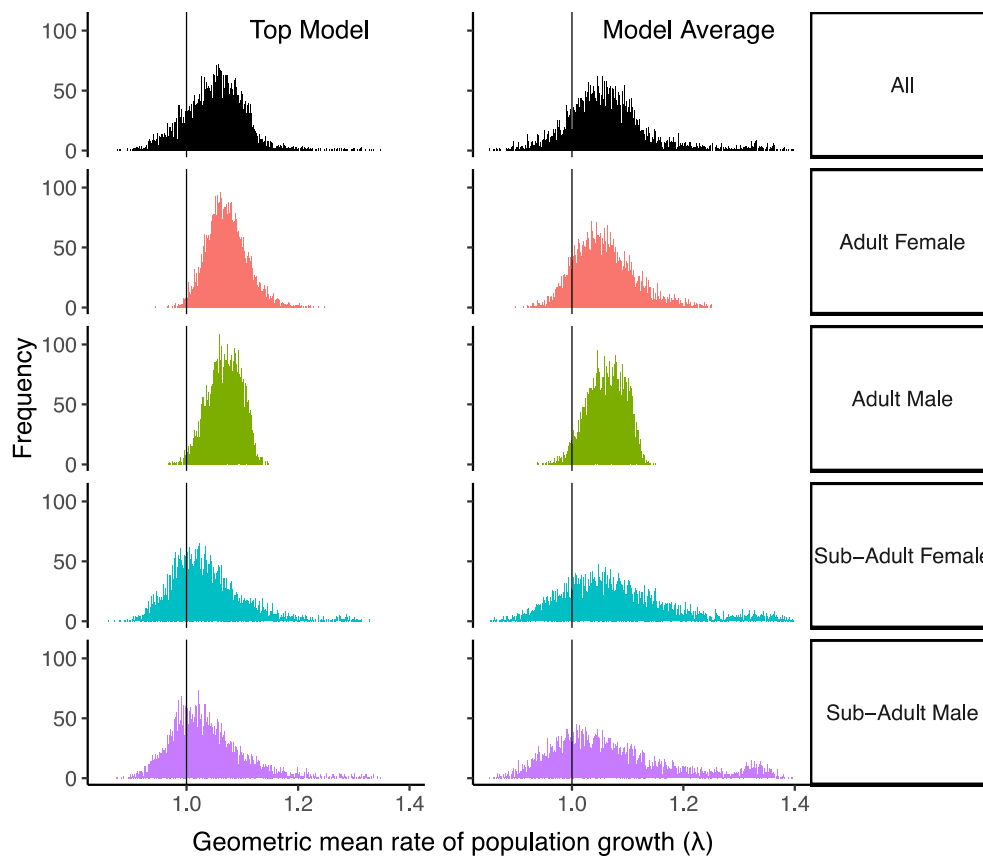


Fig. 4. Frequency distributions of geometric mean population growth rate values calculated from bootstrap sampling for each group (colored) of white shark along with the overall population (black). (For interpretation of the references to colour in this figure legend, the reader is referred to the web version of this article.)

Table 3

Estimated seasonal geometric mean of λ with associated 95% confidence intervals for each group of white shark as well as the overall estimate.

Group	Top model λ (95% C.I.)	Model avg. λ (95% C.I.)
All	1.05 (0.94–1.16)	1.07 (0.91–1.23)
Adult males	1.07 (1.01–1.13)	1.06 (0.99–1.13)
Adult females	1.07 (1.00–1.17)	1.06 (0.95–1.17)
Sub-adult males	1.04 (0.90–1.17)	1.07 (0.85–1.29)
Sub-adult females	1.04 (0.90–1.17)	1.08 (0.88–1.28)

should examine the coastal movement of sub-adult white sharks tagged at the three aggregation sites described in this study to determine if they remain alive and outside of the study area. Resolution of the movement of smaller and less competitive sub-adults could reveal whether density dependent recruitment is a factor at prime adult aggregation sites (Kanive et al., 2019).

This is the first empirical assessment of regional population trend for white sharks in the northeastern Pacific. A similar regional increase in white shark numbers in the US Economic Exclusive Zone of the northwest Atlantic showed a recovery towards early historical numbers (Curtis et al., 2014). While there are no historic baselines of white shark abundance that preclude management policies implemented in 1994 in the Pacific northeast, the results of this study suggest recent favorable management in California (including marine mammal protection, and white shark bycatch mitigation) may be contributing to a pathway for the positive population growth for this important marine top predator. Given the vulnerable life history traits of white sharks, insuring their future will take a continued effort to monitor populations and identify potential future threats such as climate change and unregulated high-seas fisheries.

CRediT authorship contribution statement

Paul Kanive, Salvador Jorgensen, Taylor Chapple, and Jay Rotella conceived the ideas and designed methodology; Paul Kanive, Salvador Jorgensen, Taylor Chapple, Scot Anderson, Timothy White and Barbara Block collected the data; Paul Kanive and Jay Rotella analyzed the data; Paul Kanive led the writing of the manuscript. All authors contributed critically to the drafts and gave final approval for publication.

Declaration of competing interest

The authors declare no conflict of interests.

Acknowledgements

The Monterey Bay Aquarium and Stanford University funded this project. We thank B. Becker, R. Elliott, O. Jewell, J. Moxley, J. Benson, M. Castleton, P. Conroy, J. Fitzgerald, B. Halaska, T. Chambert, J.T. Paterson, A.P. Klimley, K. Neff, A. Copenhaver, T. Baty, S. Rhodes, T.D. and C. Ritter, S. Lange, N. Arnoldi, and the many field volunteers who helped on this project including the Sausalito Marine Mammal Center. We would also like to thank David Shaw, Arjun Gupta, Robert and Sarah Nixon, Discovery Communications, Rolex Award for Enterprise, Theo Ivanovic, Tom O'Leary, Shelly Tubaugh of Grady White Boats, TAG A Giant donors for specific support of our Stanford University White Shark program, and Año Nuevo Reserve for their assistance and Cooperation. This work was conducted under permission from the California Department of Fish and Wildlife (SCP-2014001349), National Oceanic and Atmospheric Administration (MULTI-2014-013-A1), National Park Service (NPS-PORE-00031), Montana State University (IACUC 2015-21), and Stanford APLAC and IACUC procedures. We also had written

permission to salvage marine mammal parts from the National Marine Fisheries Service.

Data availability statement

Data will be made available directly from online repository, <https://zenodo.org/record/4022914#.X2IxTGdKjOR>.

Appendix A. Supplementary data

Supplementary data to this article can be found online at <https://doi.org/10.1016/j.biocon.2021.109104>.

References

- Anderson, S.D., Chapple, T.K., Jorgensen, S.J., Klimley, A.P., Block, B.A., 2011. Long-term individual identification and site fidelity of white sharks, *Carcharodon carcharias*, off California using dorsal fins. *Mar. Biol.* 158 (6), 1233–1237. <https://doi.org/10.1007/s00227-011-1643-5>.
- Barnett, A., Abrantes, K.G., Stevens, J.D., Semmens, J.M., 2011. Site fidelity and sex-specific migration in a mobile apex predator: implications for conservation and ecosystem dynamics. *Anim. Behav.* 81 (5), 1039–1048. <https://doi.org/10.1016/j.anbehav.2011.02.011>.
- Benson, J.F., Jorgensen, S.J., O'Sullivan, J.B., Winkler, C., White, C.F., Garcia-Rodriguez, E., Sosa-Nishizaki, O., Lowe, C.G., 2018. Juvenile survival, competing risks, and spatial variation in mortality risk of a marine apex predator. *J. Appl. Ecol.* 0 (0) <https://doi.org/10.1111/1365-2664.13158>.
- Block, B.A., Jonsen, I.D., Jorgensen, S.J., Winship, A.J., Shaffer, S.A., Bograd, S.J., Hazen, E.L., Foley, D.G., Breed, G.A., Harrison, A.-L., Ganong, J.E., Swithenbank, A., Castleton, M., Dewar, H., Mate, B.R., Shillinger, G.L., Schaefer, K.M., Benson, S.R., Weise, M.J., Costa, D.P., 2011. Tracking apex marine predator movements in a dynamic ocean. *Nature* 475 (7354), 86–90. <https://doi.org/10.1038/nature10082>.
- Blower, D.C., Pandolfi, J.M., Bruce, B.D., Gomez-Cabrera, M. del C., Ovenden, J.R., 2012. Population genetics of Australian white sharks reveals fine-scale spatial structure, transoceanic dispersal events and low effective population sizes. *Mar. Ecol. Prog. Ser.* 455, 229–244. <https://doi.org/10.3354/meps09659>.
- Boeuf, B.L., Laws, R.M., 1994. *Elephant Seals: Population Ecology, Behavior, and Physiology*. University of California Press.
- Bruce, B.D., Stevens, J.D., Malcolm, H., 2006. Movements and swimming behaviour of white sharks (*Carcharodon carcharias*) in Australian waters. *Mar. Biol.* 150 (2), 161–172. <https://doi.org/10.1007/s00227-006-0325-1>.
- Buckland, S., Garthwaite, P., 1991. Quantifying precision of mark-recapture estimates using the bootstrap and related methods. *Biometrics* 47 (1), 255–268.
- Burgess, G.H., Bruce, B.D., Cailliet, G.M., Goldman, K.J., Grubbs, R.D., Lowe, C.G., MacNeil, M.A., Mollet, H.F., Weng, K.C., O'Sullivan, J.B., 2014. A Re-Evaluation of the Size of the White Shark (*Carcharodon carcharias*) Population off California, USA. *PLoS ONE* 9 (6). <https://doi.org/10.1371/journal.pone.0098078>.
- Burnham, K.P., Anderson, D.R., 2002. *Model Selection and Multi-Model Inference: A Practical Information-Theoretic Approach*. Springer.
- Chapple, Taylor K., Botsford, L.W., 2013. A comparison of linear demographic models and fraction of lifetime egg production for assessing sustainability in sharks. *Conserv. Biol.* 27 (3), 560–568. <https://doi.org/10.1111/cobi.12053>.
- Chapple, Taylor K., Jorgensen, S.J., Anderson, S.D., Kanive, P.E., Klimley, A.P., Botsford, L.W., Block, B.A., 2011. A first estimate of white shark, *Carcharodon carcharias*, abundance off Central California. *Biol. Lett.* 7 (4), 581–583. <https://doi.org/10.1098/rsbl.2011.0124>.
- Chapple, T.K., Chamber, T., Kanive, P.E., Jorgensen, S.J., Rotella, J.J., Anderson, S.D., Carlisle, A.B., Block, B.A., 2016. A novel application of multi-event modeling to estimate class segregation in a highly migratory oceanic vertebrate. *Ecology* 97 (12), 3494–3502. <https://doi.org/10.1002/ecy.1589>.
- Cooch, E.G., White, G.C., 2019. Program MARK a Gentle Introduction, 19th ed. <http://www.phidot.org/software/mark/docs/book/>.
- Cortés, E., 2000. Life history patterns and correlations in sharks. *Rev. Fish. Sci.* 8 (4), 299–344. <https://doi.org/10.1080/10408340308951115>.
- Curtis, T.H., McCandless, C.T., Skomal, G.B., Kohler, N.E., Natanson, L.J., Burgess, G.H., Hoey, J.J., Pratt Jr., H.L., 2014. Seasonal Distribution and Historic Trends in Abundance of White Sharks, *Carcharodon carcharias*, in the Western North Atlantic Ocean. *PLoS ONE* 9 (6). <https://doi.org/10.1371/journal.pone.0099240>.
- Domeier, M.L., Nasby-Lucas, N., 2008. Migration patterns of white sharks *Carcharodon carcharias* tagged at Guadalupe Island, Mexico, and identification of an eastern Pacific shared offshore foraging area. *Mar. Ecol. Prog. Ser.* 370, 221–237. <https://doi.org/10.3354/meps07628>.
- Drechsler, A., Helling, T., Steinfartz, S., 2015. Genetic fingerprinting proves cross-correlated automatic photo-identification of individuals as highly efficient in large capture-mark-recapture studies. *Ecol. Evol.* 5 (1), 141–151. <https://doi.org/10.1002/ece3.1340>.
- Dudgeon, C.L., Pollock, K.H., Braccini, J.M., Semmens, J.M., Barnett, A., 2015. Integrating acoustic telemetry into mark-recapture models to improve the precision of apparent survival and abundance estimates. *Oecologia* 178 (3), 761–772. <https://doi.org/10.1007/s00442-015-3280-z>.
- Dulvy, N.K., Baum, J.K., Clarke, S., Compagno, L.J.V., Cortés, E., Domingo, A., Fordham, S., Fowler, S., Francis, M.P., Gibson, C., Martínez, J., Musick, J.A., Soldo, A., Stevens, J.D., Valenti, S., 2008. You can swim but you can't hide: the global status and conservation of oceanic pelagic sharks and rays. *Aquat. Conserv. Mar. Freshwat. Ecosyst.* 18 (5), 459–482. <https://doi.org/10.1002/aqc.975>.
- Efron, B., Tibshirani, R., 1986. Bootstrap methods for standard errors, confidence intervals, and other measures of statistical accuracy. *Stat. Sci.* 1 (1), 54–75.
- Francis, M.P., 1996. Observations on a pregnant white shark with a review of reproductive biology. *Great White Sharks: The Biology of Carcharodon carcharias*. Academic Press, pp. 157–172.
- Gubili, C., Bilgin, R., Kalkan, E., Karhan, S.Ü., Jones, C.S., Sims, D.W., Kabasakal, H., Martin, A.P., Noble, L.R., 2010. Antipodean white sharks on a Mediterranean walkabout? Historical dispersal leads to genetic discontinuity and an endangered anomalous population. *Proc. R. Soc. Lond. B Biol. Sci.*, rspb20101856 <https://doi.org/10.1098/rspb.2010.1856>.
- Heneman, B., Glazer, M., 1996. More rare than dangerous: a case study of white shark conservation in California. In: *Great White Sharks: The Biology of Carcharodon carcharias*. Academic Press, pp. 481–491.
- Hilborn, R., Walters, C.J., 1992. *Quantitative Fisheries Stock Assessment: Choice, Dynamics and Uncertainty*. Chapman & Hall, New York.
- Holmberg, J., Norman, B., Arzoumanian, Z., 2009. Estimating population size, structure, and residency time for whale sharks *Rhincodon typus* through collaborative photo-identification. *Endanger. Species Res.* 7 (1), 39–53. <https://doi.org/10.3354/esr00186>.
- IUCN-CEM, 2019. The IUCN Red List of Ecosystems. Version 2019-1. <http://iucnrl.org>.
- Jolly, G.M., 1965. Explicit estimates from capture-recapture data with both death and immigration-stochastic model. *Biometrika* 52 (1/2), 225–247. <https://doi.org/10.2307/2333826>.
- Jorgensen, S.J., Reeb, C.A., Chapple, T.K., Anderson, S., Perle, C., Sommeran, V., S, R., Fritz-Cope, C., Brown, A.C., Klimley, A.P., Block, B.A., 2010. Philopatry and migration of Pacific White sharks. *Proc. R. Soc. B Biol. Sci.* 277 (1682), 679–688. <https://doi.org/10.1098/rspb.2009.1155>.
- Kanive, P.E., Rotella, J.J., Jorgensen, S.J., Chapple, T.K., Anderson, S.D., Klimley, A.P., Block, B.A., 2015. Estimating apparent survival of sub-adult and adult white sharks (*Carcharodon carcharias*) in Central California using mark-recapture methods. *Mar. Megafauna* 2, 19. <https://doi.org/10.3389/fmars.2015.00019>.
- Kanive, P.E., Rotella, J.J., Jorgensen, S.J., Chapple, T.K., Hines, J.E., Anderson, S.D., Block, B.A., 2019. Size-specific apparent survival rate estimates of white sharks using mark-recapture models. *Can. J. Fish. Aquat. Sci.* <https://doi.org/10.1139/cjfas-2018-0142carlisle>.
- Kendall, W.L., Nichols, J.D., Hines, J.E., 1997. Estimating temporary emigration using capture-recapture data with Pollock's robust design. *Ecology* 78 (2), 563–578.
- Klimley, A.P., 1985. The areal distribution and autoecology of the white shark, *Carcharodon carcharias*, of the west coast of North America. *Memoirs Southern Calif. Acad. Sci.* 9, 15–40.
- Kneebone, J., Chisholm, J., Skomal, G.B., 2012. Seasonal residency, habitat use, and site fidelity of juvenile sand tiger sharks *Carcharias taurus* in a Massachusetts estuary. *Mar. Ecol. Prog. Ser.* 471, 165–181. <https://doi.org/10.3354/meps09989>.
- Laake, J.L., 2013. RMark: an R Interface for analysis of capture-recapture data with MARK. *Alaska Fish. Sci. Cent., NOAA, Natl. Mar. Fish. Serv.* 82 (3), 583–595. <https://doi.org/10.1002/jwmg.21405>. In: <http://www.afsc.noaa.gov/Publications/ProcRpt/PR2013-01.pdf>.
- Laake, Jeffrey L., Lowry, M.S., DeLong, R.L., Melin, S.R., Carretta, J.V., 2018. Population growth and status of California sea lions. *J. Wildl. Manag.* 82 (3), 583–595. <https://doi.org/10.1002/jwmg.21405>.
- Lewontin, R.C., Cohen, D., 1969. On population growth in a randomly varying environment. *Proc. Natl. Acad. Sci.* 62 (4), 1056–1060. <https://doi.org/10.1073/pnas.62.4.1056>.
- Lowe, C., Blasius, M., Jarvis, E., Mason, T., Goodmanlowe, G., O'Sullivan, J., 2012. Historic fishery interactions with white sharks in the southern California bight. In: Domeier, Michael (Ed.), *Global Perspectives on the Biology and Life History of the White Shark*. CRC Press, pp. 169–186. <http://www.crcnetbase.com/doi/abs/10.1201/b11532-17>.
- Lowry, M., 2014. Abundance, distribution, and population growth of the northern elephant seal (*Mirovanga angustirostris*) in the United States from 1991 to 2010. *Aquat. Mamm.* 40 (1), 20–31. <https://doi.org/10.1578/AM.40.1.2014.20>.
- Marine Mammal Protection Act of 1972 (16 U.S.C. 1361-1407, P.L. 92-522, October 21, 1972, 86 Stat. 1027).
- Miller, C.R., Joyce, P., Waits, L.P., 2005. A new method for estimating the size of small populations from genetic mark-recapture data. *Mol. Ecol.* 14 (7), 1991–2005. <https://doi.org/10.1111/j.1365-294X.2005.02577.x>.
- Moxley, J.H., Nicholson, T.E., Van Houtan, K.S., Jorgensen, S.J., 2019. Non-trophic impacts from white sharks complicate population recovery for sea otters. *Ecol. Evol.* 0 (0) <https://doi.org/10.1002/ece3.5209>.
- Myers, R.A., Baum, J.K., Shepherd, T.D., Powers, S.P., Peterson, C.H., 2007. Cascading effects of the loss of apex predatory sharks from a Coastal Ocean. *Science* 315 (5820), 1846–1850. <https://doi.org/10.1126/science.1138657>.
- Nichols, J.D., Kendall, W.L., Hines, J.E., Spindel, J.A., 2004. Estimation of sex-specific survival from capture-recapture data when sex is not always known. *Ecology* 85 (12), 3192–3201. <https://doi.org/10.1890/03-0578>.
- O'Leary, S.J., Feldheim, K.A., Fields, A.T., Natanson, L.J., Wintner, S., Hussey, N., Shivji, M.S., Chapman, D.D., 2015. Genetic diversity of White sharks, *Carcharodon carcharias*, in the Northwest Atlantic and southern Africa. *J. Hered.*, esv001 <https://doi.org/10.1093/jhered/esv001>.
- Pardini, A.T., Jones, C.S., Scholl, M.C., Noble, L.R., 2000. Isolation and characterization of dinucleotide microsatellite loci in the Great White Shark, *Carcharodon carcharias*. *Mol. Ecol.* 9 (8), 1176–1178. <https://doi.org/10.1046/j.1365-294x.2000.00954-4.x>.

- Pope, J.G., Macdonald, D.S., Daan, N., Reynolds, J.D., Jennings, S., 2000. Gauging the impact of fishing mortality on non-target species. *ICES J. Mar. Sci.* 57 (3), 689–696. <https://doi.org/10.1006/jmsc.2000.0729>.
- Powell, L.A., 2007. Approximating variance of demographic parameters using the delta method: a reference for avian biologists. *Condor* 109 (4), 949–954. [https://doi.org/10.1650/0010-5422\(2007\)109\[949:AVODPU\]2.0.CO;2](https://doi.org/10.1650/0010-5422(2007)109[949:AVODPU]2.0.CO;2).
- Pradel, R., Hines, J.E., Lebreton, J.-D., Nichols, J.D., 1997. Capture-recapture survival models taking account of transients. *Biometrics* 53 (1), 60–72. <https://doi.org/10.2307/2533097>.
- Pratt, H.L., 1996. Reproduction in the male white shark. In: *Great White Sharks: The Biology of *Carcharodon carcharias**. Academic Press, pp. 131–138.
- Queiroz, N., Humphries, N.E., Couto, A., Vedor, M., Costa, I. da, Sequeira, A.M.M., Mucientes, G., Santos, A.M., Abascal, F.J., Abercrombie, D.L., Abrantes, K., Acuña-Marrero, D., Afonso, A.S., Afonso, P., Anders, D., Araujo, G., Arauz, R., Bach, P., Barnett, A., Sims, D.W., 2019. Global spatial risk assessment of sharks under the footprint of fisheries. *Nature* 572 (7770), 461–466. <https://doi.org/10.1038/s41586-019-1444-4>.
- R Core Team, 2018. A Language and Environment for Statistical Computing. R Foundation for Statistical Computing, Vienna. <https://www.R-project.org>.
- Schwarz, C.J., Arnason, A.N., 1996. A general methodology for the analysis of capture-recapture experiments in open populations. *Biometrics* 52 (3), 860–873. <https://doi.org/10.2307/2533048>.
- Seber, G.A.F., 1965. A note on the multiple-recapture census. *Biometrika* 52 (1/2), 249–259. <https://doi.org/10.2307/2333827>.
- Skomal, G.B., Braun, C.D., Chisholm, J.H., Thorrold, S.R., 2017. Movements of the white shark *Carcharodon carcharias* in the North Atlantic Ocean. *Mar. Ecol. Prog. Ser.* 580, 1–16. <https://doi.org/10.3354/meps12306>.
- Tanaka, S., Kitamura, T., Mochizuki, T., Kofuji, K., 2011. Age, growth and genetic status of the white shark (*Carcharodon carcharias*) from Kashima-nada, Japan. *Mar. Freshw. Res.* 62 (6), 548–556.
- Tanaka, K.R., Van Houtan, K.S., Mailander, E., Diaz, B.S., Galginitis, C., O'Sullivan, J.B., Lowe, C.G., Jorgensen, S.J., 2021. North Pacific warming shifts the juvenile range of a marine apex predator. *Sci. Rep.* <https://doi.org/10.1038/s41598-021-82424-9>.
- Tienhoven, A.M.V., Hartog, J.E.D., Reijns, R.A., Peddemors, V.M., 2007. A computer-aided program for pattern-matching of natural marks on the spotted raggedtooth shark *Carcharias taurus*. *J. Appl. Ecol.* 44 (2), 273–280. <https://doi.org/10.1111/j.1365-2664.2006.01273.x>.
- Tinker, M.T., Hatfield, B.B., Harris, M.D., Ames, J.A., 2016. Dramatic increase in sea otter mortality from white sharks in California. *Mar. Mammal Sci.* 32 (1), 309–326. <https://doi.org/10.1111/mms.12261>.
- Towner, A.V., Wcisel, M.A., Reisinger, R.R., Edwards, D., Jewell, O.J.D., 2013. Gauging the threat: the first population estimate for white sharks in South Africa using photo identification and automated software. *PLoS One* 8 (6), e66035. <https://doi.org/10.1371/journal.pone.0066035>.
- Weng, K., Boustany, A., Pyle, P., Anderson, S., Brown, A., Block, B., 2007. Migration and habitat of white sharks (*Carcharodon carcharias*) in the eastern Pacific Ocean. *Mar. Biol.* 152 (4), 877–894. <https://doi.org/10.1007/s00227-007-0739-4>.
- White, G.C., Burnham, K.P., 1999. Program MARK: survival estimation from populations of marked animals. *Bird Stud.* 46 (sup001), S120–S139. <https://doi.org/10.1080/00063659909477239>.
- White, T.D., Ferretti, F., Kroodsma, D.A., Hazen, E.L., Carlisle, A.B., Scales, K.L., Bograd, S.J., Block, B.A., 2019. Predicted hotspots of overlap between highly migratory fishes and industrial fishing fleets in the Northeast Pacific. *Sci. Adv.* 5 (3), eaau3761 <https://doi.org/10.1126/sciadv.aau3761>.
- Williams, B. k, Nichols, J.D., Conroy, M.J., 2002. *Analysis and Management of Animal Populations: Modeling, Estimation, and Decision Making*. Academic Press.
- Worm, B., Davis, B., Kettner, L., Ward-Paige, C.A., Chapman, D., Heithaus, M.R., Kessel, S.T., Gruber, S.H., 2013. Global catches, exploitation rates, and rebuilding options for sharks. *Mar. Policy* 40, 194–204. <https://doi.org/10.1016/j.marpol.2012.12.034>.