

Library Lingo

An MSU Libraries Publication

VOLUME 2 ISSUE 3

NOVEMBER 2008

Need research assistance? Ask a Librarian

www.lib.montana.edu/ask

View our recent books and videos purchases at www.lib.montana.edu/newbooks/

Renne Library Fall Hours

Mon.-Thurs 7am - 12am
Friday 7am - 6pm
Sat. 10am - 5pm
Sun. 10am - 12am

Creative Arts Library Cheever 207 Fall Hours

Mon.-Thurs 8am - 10pm
Friday 8am - 5pm
Saturday 10am - 5pm
Sunday 10am - 10pm

Special Collections

Mon.-Fri. 9:30am-5pm
Sat. & Sun. - Closed

Library Telephone Numbers

AV/Microform 994-5299
Circ. 994-3139
CAL Library 994-4091
ILL 994-3161
Reference 994-3171
Special Coll. 994-4242

DO YOU HAVE GRAD SCHOOL ON YOUR MIND?

Is grad school in your future? Planning on taking the GRE, LSAT, MCAT or GMAT? Don't want to spend a lot of money on test preparation materials? Then check out the Testing and Education Reference Center.

For each test (GRE, LSAT, MCAT and GMAT), the Testing and Education Reference Center provides access to Peterson's study manuals and two or three interactive practice tests.

In addition, there is a Graduate Search section which allows you to search for graduate schools in your field of study. Results contain information about the program, research facilities, financial aid, tuition, cost of living, the application process and more.

Not sure if you can afford grad school? The TERC also contains sections on how to locate scholarships or even get recruited into a graduate program.

This database is available from the alphabetical list on our database page which can be found at www.lib.montana.edu/resources.

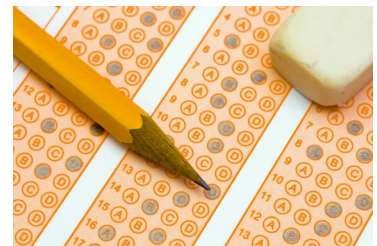
For more information about the GRE, LSAT, MCAT or GMAT, check out the links below.

GRE - www.ets.org/gre/

GMAT - <http://www.mba.com/mba/TaketheGMAT>

LSAT - <http://www.lsac.org/LSAT/TheLSAT-menu.asp>

MCAT - <http://www.aamc.org/students/mcat/>



Famous First Lines - Below are a list of first lines from some great books. Can you match the line to its title?

A. "It was the best of times, it was the worst of times."

Harry Potter and the Sorcerer's Stone / J.K. Rowling
Location: Juvenile FIC R

B. "It was a bright cold day in April, and the clocks were striking thirteen."

A Tale of Two Cities / Charles Dickens
Location 2nd Floor. PR4571.A1 2003

C. "Mr. and Mrs. Dursley, of number four Privet Drive, were proud to say they were perfectly normal, thank you very much."

Moby Dick / Herman Melville
Location: 2nd Floor PS2384.M6 2000

D. "Call me, Ishmael."

1984 / George Orwell
Location: 2nd Floor PR6029.R8N49 1992