

SI Figure 2a-1. Taxa detected in neutral (pH 4.5-8.0) high temperature (>73C) sulfidic (>3.0 mM) springs of western North America. Asterix indicates that a *merA* sequence most closely affiliated with this taxon was also recovered from one or more sites in which an isolate or the 16S rRNA of this taxon was obtained. Numeral indicates number of sites with Hg data.



SI Figure 2a-2. Taxa detected in neutral (pH 4.5-8.0) high temperature (>73°C) sulfidic (>3.0 mM) springs of western North America. Asterisk indicates that a *merA* sequence most closely affiliated with this taxon was also recovered from one or more sites in which an isolate or the 16S rRNA of this taxon was obtained. Numeral indicates number of sites with Hg data.

Figure 2a References

- Auchtung, T.A., Takacs-Vesbach, C.D. and Cavanaugh, C.A. (2006) 16S rRNA phylogenetic investigation of the candidate division "Korarchaeota". *Appl. Environ. Microbiol.* 72, 5077-5082.
- Barns, S.M., Delwiche, C.F., Palmer, J.D. and Pace, N.R. (1996) Perspectives on archaeal diversity, thermophily and monophyly from environmental rRNA sequences. *PNAS (USA)* 93, 9188-9193.
- Barns, S.M., Fundyga, R.E., Jeffries, M.W. and Pace, N.R. (1994) Remarkable archaeal diversity detected in a Yellowstone National Park hot-spring environment. *PNAS (USA)* 91, 1609-1613.
- Beam, J.P., Jay, Z.J., Kozubal, M.A. and Inskip, W.P. (2014) Niche specialization of novel Thaumarchaeota to oxic and hypoxic acidic geothermal springs of Yellowstone National Park. *ISME J.* 8, 938-951.
- Connon, S.A., Koski, A.K., Neal, A.L., Wood, S.A. and Magnuson, T.S. (2008) Ecophysiology and geochemistry of microbial arsenic oxidation within a high arsenic, circumneutral hot spring system of the Alvord Desert. *FEMS Microbiol. Ecol.* 64, 117-128.
- Dick, J.M. and Shock, E.L. (2013) A metastable equilibrium model for the relative abundances of microbial phyla in a hot spring. *Plos One* 8, e72395.
- Dodsworth, J.A., Blainey, P.C., Murugapiran, S.K., Swingley, W.D., Ross, C.A., Tringe, S.G., Chain, P.S.G., Scholz, M.B., Lo, C.-C., Raymond, J., Quake, S.R. and Hedlund, B.P. (2013) Single-cell and metagenomic analyses indicate a fermentative and saccharolytic lifestyle for members of the OP9 lineage. *Nature Comm.* 4, 1854 doi: 1810.1038/ncomms2884.
- Dodsworth, J.A. and Hedlund, B.P. (2010) Microbiology and geochemistry of Smith Creek and Grass Valley Hot Springs: Emerging evidence for wide distribution of novel thermophilic lineages in the US Great Basin. *J. Earth Sci.* 21, 315-318.
- Dunfield, P.F., Tamas, I., Lee, K.C., Morgan, X.C., McDonald, I.R. and Stott, M.B. (2012) Electing a candidate: a speculative history of the bacterial phylum OP10. *Environ. Microbiol.* 14, 3069-3080.
- Elkins, J.G., Podar, M., Graham, D.E., Makarova, K.S., Wolf, Y., Randau, L., Hedlund, B.P., Brochier-Armanet, C., Kunin, V., Anderson, I., Lapidus, A., Goltsman, E., Barry, K., Koonin, E.V., Hugenholtz, P., Kyrpides, N., Wanner, G., Richardson, P., Keller, M. and Stetter, K.O. (2008) A korarchaeal genome reveals insights into the evolution of the Archaea. *PNAS (USA)* 105, 8102-8107.
- Hamamura, N., Macur, R.E., Korf, S., Ackerman, G., Taylor, W.P., Kozubal, M., Reysenbach, A.L. and Inskip, W.P. (2009) Linking microbial oxidation of arsenic with detection and phylogenetic analysis of arsenite oxidase genes in diverse geothermal environments. *Environ. Microbiol.* 11, 421-431.

Havig, J.R., Raymond, J., Meyer-Dombard, D.A.R., Zolotova, N. and Shock, E.L. (2011) Merging isotopes and community genomics in a siliceous sinter-depositing hot spring. *J. Geophys. Res. Biogeosciences* 116, doi:10.1029/2010JG001415.

Hugenholtz, P., Pitulle, C., Hershberger, K.L. and Pace, N.R. (1998) Novel division level bacterial diversity in a Yellowstone hot spring. *J. Bacteriol.* 180, 366-376.

Inskeep, W.P., Ackerman, G.G., Taylor, W.P., Kozubal, M., Korf, S. and Macur, R.E. (2005) On the energetics of chemolithotrophy in nonequilibrium systems: case studies of geothermal springs in Yellowstone National Park. *Geobiology* 3, 297-317.

Inskeep, W.P., Jay, Z.J., Herrgard, M.J., Kozubal, M.A., Rusch, D.B., Tringe, S.G., Macur, R.E., Jennings, R.d.M., Boyd, E.S., Spear, J.R. and Roberto, F.F. (2013a) Phylogenetic and functional analysis of metagenome sequence from high-temperature archaeal habitats demonstrate linkages between metabolic potential and geochemistry. *Front. Microbiol.* 4, doi: 10.3389/fmicb.2013.00095.

Inskeep, W.P., Jay, Z.J., Tringe, S.G., Herrgard, M.J., Rusch, D.B. and Members, Y.M.P.S.C.a.W.G. (2013b) The YNP metagenomic project: environmental parameters responsible for microbial distribution in the Yellowstone geothermal ecosystem. *Front. Microbiol.* 4, doi: 10.3389/fmicb.2013.00067.

Inskeep, W.P., Rusch, D.B., Jay, Z.J., Herrgard, M.J., Kozubal, M.A., Richardson, T.H., Macur, R.E., Hamamura, N., Jennings, R.d., Fouke, B.W., Reysenbach, A.-L., Roberto, F., Young, M., Schwartz, A., Boyd, E.S., Badger, J.H., Mathur, E.J., Ortmann, A.C., Bateson, M., Geesey, G. and Frazier, M. (2010) Metagenomes from high-temperature chemotrophic systems reveal geochemical controls on microbial community structure and function. *Plos One* 5, e9773.

Jay, Z.J. (2014) Linking geochemistry with microbial community structure and function in sulfidic geothermal systems of Yellowstone National Park, *Land Resources and Environmental Sciences*. Montana State University, Bozeman, MT, p. 258.

Jay, Z.J. and Inskeep, W.P. (2015) The distribution, diversity, and importance of 16S rRNA gene introns in the order Thermoproteales. *Biol. Direct* doi:10.1186/s13062-015-0065-6.

Jay, Z.J., Rusch, D.B., Tringe, S.G., Bailey, C., Jennings, R.M. and Inskeep, W.P. (2014) Predominant *Acidilobus*-like populations from geothermal environments in Yellowstone National Park exhibit similar metabolic potential in different hypoxic microbial communities. *Appl. Environ. Microbiol.* 80, 294-305.

Johnson, D.B., Okibe, N. and Roberto, F.F. (2003) Novel thermo-acidophilic bacteria isolated from geothermal sites in Yellowstone National Park: physiological and phylogenetic characteristics. *Arch. Microbiol.* 180, 60-68.

Macur, R.E., Jay, Z.J., Taylor, W.P., Kozubal, M.A., Kocar, B.D. and Inskeep, W.P. (2013) Microbial community structure and sulfur biogeochemistry in mildly-acidic sulfidic geothermal springs in Yellowstone National Park. *Geobiology* 11, 86-99.

Meyer-Dombard, D.R., Shock, E.L. and Amend, J.P. (2005) Archaeal and bacterial communities in geochemically diverse hot springs of Yellowstone National Park, USA. *Geobiology* 3, 211-227.

Miller-Coleman, R.L., Dodsworth, J.A., Ross, C.A., Shock, E.L., Williams, A., Hartnett, H.E., McDonald, A.I., Havig, J.R. and Hedlund, B.P. (2012) Korarchaeota diversity, biogeography, and abundance in Yellowstone and Great Basin hot springs and ecological niche modeling based on machine learning. *PLoS One* 7, e35964.

Nordstrom, D.K., Hasselbach, L., Ingbritsen, S.E., Skorupa, D., McCleskey, R.B. and McDermott, T.R. (2015) An environmental survey of Serpentine Hot Springs: Geology, hydrology, geochemistry and microbiology., Natural Resources Report NPS/BELA/NRR-2015/1019 U.S. National Parks Service, Fort Collins, CO.

Podar, M., Makarova, K.S., Graham, D.E., Wolf, Y.I., Koonin, E.V. and Reysenbach, A.-L. (2013) Insights into archaeal evolution and symbiosis from the genomes of a nanoarchaeon and its inferred crenarchaeal host from Obsidian Pool, Yellowstone National Park. *Biology Direct* 8, doi: 10.1186/1745-6150-8-9.

Reysenbach, A.L., Ehringer, H. and Hershberger, K. (2000) Microbial diversity at 83 degrees C in Calcite Springs, Yellowstone National Park: another environment where the *Aquificales* and "Korarchaeota" coexist. *Extremophiles* 4, 61-67.

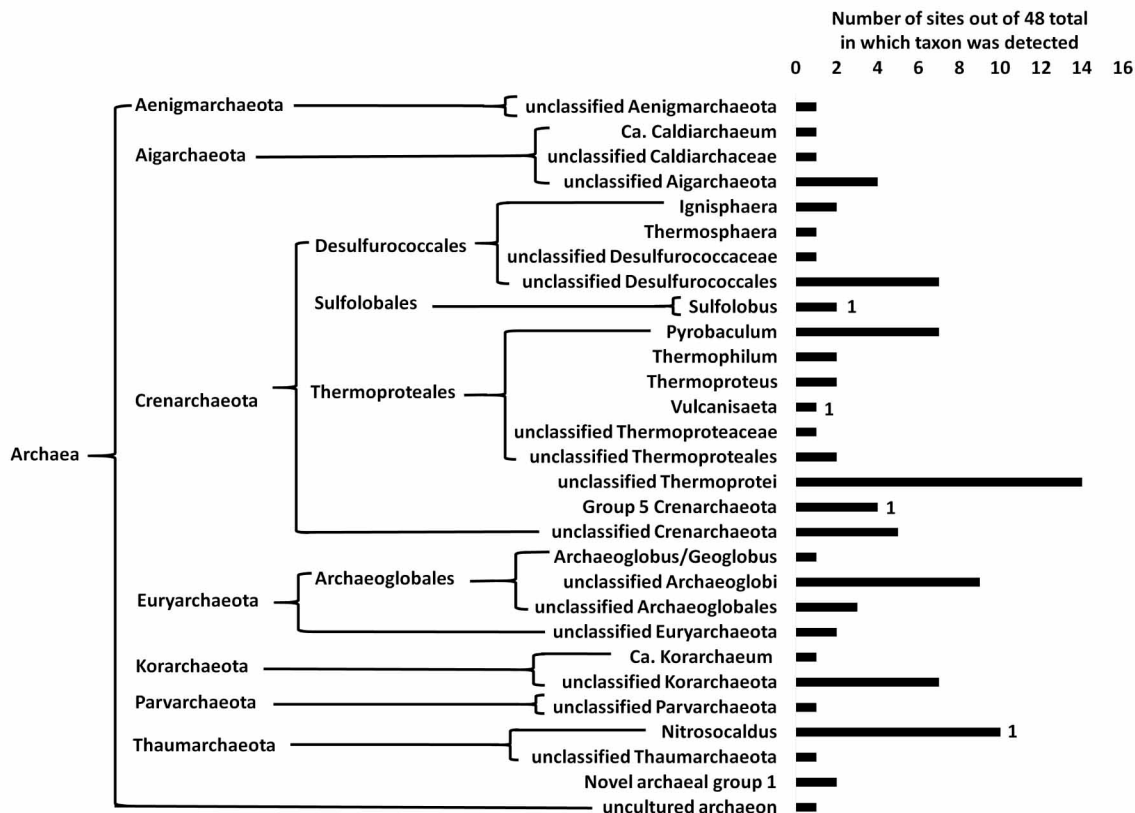
Spear, J.R., Walker, J.J., McCollom, T.M. and Pace, N.R. (2005) Hydrogen and bioenergetics in the Yellowstone geothermal ecosystem. *PNAS (USA)* 102, 2555-2560.

Spear, J.R., Walker, J.J. and Pace, N.R. (2006) Microbial ecology and energetics in Yellowstone hot springs. *Yellowstone Science* 14, 17-24.

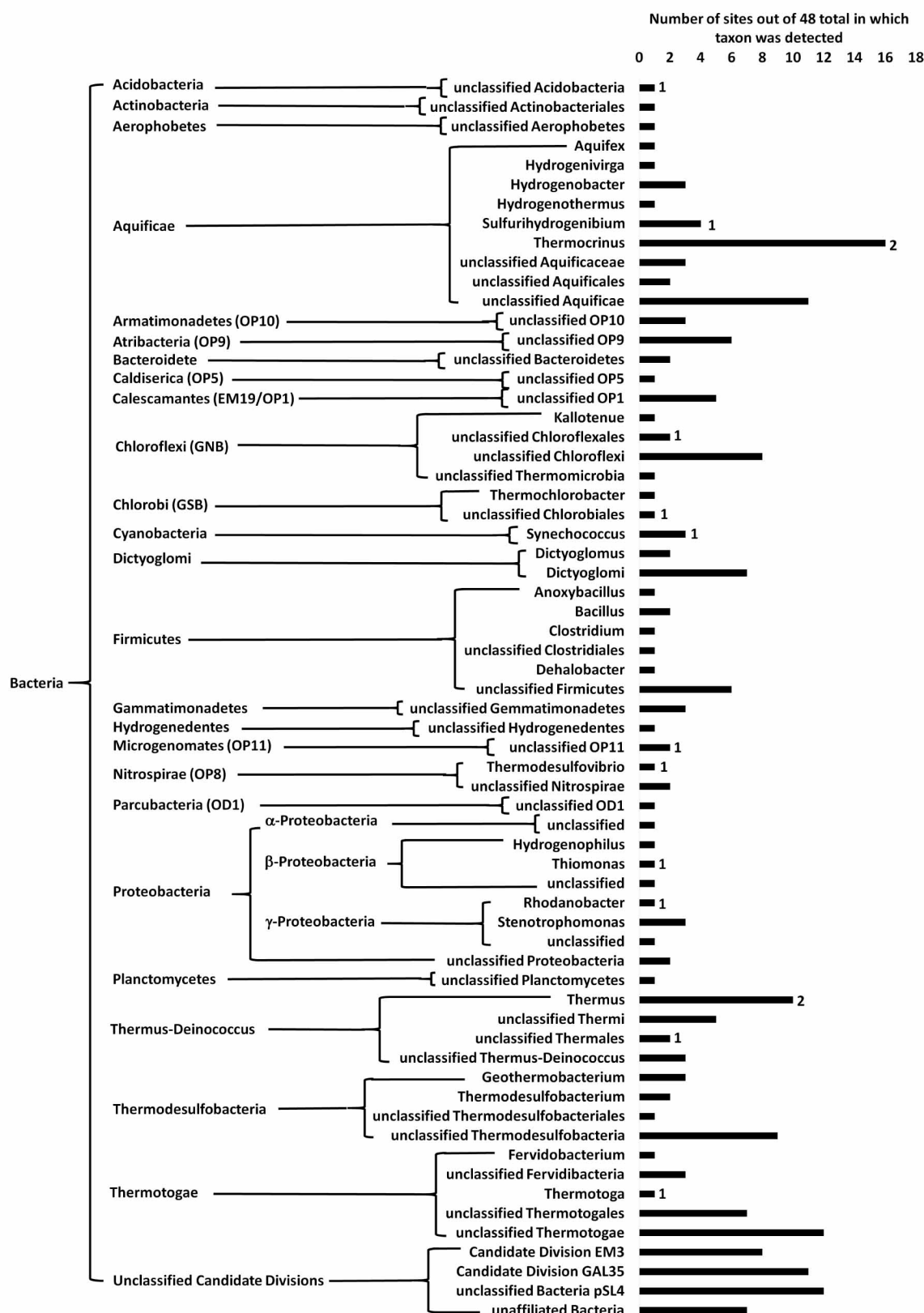
Swingle, W.D., Meyer-Dombard, D.A.R., Shock, E.L., Alsop, E.B., Falenski, H.D., Havig, J.R. and Raymond, J. (2012) Coordinating environmental genomics and geochemistry reveals metabolic transitions in a hot spring ecosystem. *Plos One* 7, e38108.

Vick, T.J., Dodsworth, J.A., Costa, K.C., Shock, E.L. and Hedlund, B.P. (2010) Microbiology and geochemistry of Little Hot Creek, a hot spring environment in the Long Valley Caldera. *Geobiology* 8, 140-154.

Vishnivetskaya, T.A., Hamilton-Brehm, S.D., Podar, M., Mosher, J.J., Palumbo, A.V., Phelps, T.J., Keller, M. and Elkins, J.G. (2015) Community analysis of plant biomass-degrading microorganisms from Obsidian Pool, Yellowstone National Park. *Microb. Ecol.* 69, 333-345.



SI Figure 2b-1. Taxa detected in neutral (pH4.5-8.0) high temperature (>73C) nonsulfidic (<3 μM) springs of western North America. Numeral indicates number of sites with Hg data.



SI Figure 2b-2. Taxa detected in neutral (pH4.5-8.0) high temperature (>73C) nonsulfidic (<3 μM) springs of western North America. Numeral indicates number of sites with Hg data.

Figure 2b. References

- Blank, C.E., Cady, S.L. and Pace, N.R. (2002) Microbial composition of near-boiling silica-depositing thermal springs throughout Yellowstone National Park. *Appl. Environ. Microbiol.* 68, 5123-5135.
- Boomer, S.M., Noll, K.L., Geesey, G.G. and Dutton, B.E. (2009) Formation of multilayered photosynthetic biofilms in an alkaline thermal spring in Yellowstone National Park, Wyoming. *Appl. Environ. Microbiol.* 75, 2464-2475.
- Boyd, E.S., Hamilton, T.L., Wang, J., He, L. and Zhang, C.L. (2013) The role of tetraether lipid composition in the adaptation of thermophilic archaea to acidity. *Front. Microbiol.* 4, doi: 10.3389/fmicb.2013.00062.
- Brock, T.D. and Freese, H. (1969) *Thermus aquaticus* gen. n. and sp. n., a nonsporulating extreme thermophile. *J. Bacteriol.* 98, 289-297.
- Cole, J.K., Peacock, J.P., Dodsworth, J.A., Williams, A.J., Thompson, D.B., Dong, H., Wu, G. and Hedlund, B.P. (2013) Sediment microbial communities in Great Boiling Spring are controlled by temperature and distinct from water communities. *ISME J.* 7, 718-729.
- Colman, D.R., Thomas, R., Maas, K.R. and Takacs-Vesbach, C.D. (2015) Detection and analysis of elusive members of a novel and diverse archaeal community within a thermal spring streamer consortium. *Extremophiles* 19, 307-313.
- Costa, K.C., Navarro, J.B., Shock, E.L., Zhang, C.L., Soukup, D. and Hedlund, B.P. (2009) Microbiology and geochemistry of great boiling and mud hot springs in the United States Great Basin. *Extremophiles* 13, 447-459.
- Dick, J.M. and Shock, E.L. (2013) A metastable equilibrium model for the relative abundances of microbial phyla in a hot spring. *Plos One* 8, e72395.
- Dodsworth, J.A., Blainey, P.C., Murugapiran, S.K., Swingley, W.D., Ross, C.A., Tringe, S.G., Chain, P.S.G., Scholz, M.B., Lo, C.-C., Raymond, J., Quake, S.R. and Hedlund, B.P. (2013) Single-cell and metagenomic analyses indicate a fermentative and saccharolytic lifestyle for members of the OP9 lineage. *Nat. Comm.* 4, 1854 doi: 1810.1038/ncomms2884.
- Dodsworth, J.A., Hungate, B.A. and Hedlund, B.P. (2011) Ammonia oxidation, denitrification and dissimilatory nitrate reduction to ammonium in two US Great Basin hot springs with abundant ammonia-oxidizing archaea. *Environ. Microbiol.* 13, 2371-2386.
- Elkins, J.G., Podar, M., Graham, D.E., Makarova, K.S., Wolf, Y., Randau, L., Hedlund, B.P., Brochier-Armanet, C., Kunin, V., Anderson, I., Lapidus, A., Goltsman, E., Barry, K., Koonin, E.V., Hugenholtz, P., Kyrpides, N., Wanner, G., Richardson, P., Keller, M. and Stetter, K.O. (2008) A korarchaeal genome reveals insights into the evolution of the Archaea. *PNAS (USA)* 105, 8102-8107.

- Havig, J.R., Raymond, J., Meyer-Dombard, D.A.R., Zolotova, N. and Shock, E.L. (2011) Merging isotopes and community genomics in a siliceous sinter-depositing hot spring. *J. Geophys. Res.-Biogeo.* 116, doi:10.1029/2010JG001415.
- Hedlund, B.P., McDonald, A.I., Lam, J., Dodsworth, J.A., Brown, J.R. and Hungate, B.A. (2011) Potential role of *Thermus thermophilus* and *T. oshimai* in high rates of nitrous oxide (N₂O) production in similar to 80 degrees C hot springs in the US Great Basin. *Geobiology* 9, 471-480.
- Huber, R., Eder, W., Heldwein, S., Wanner, G., Huber, H., R., R. and Stetter, K.O. (1998) *Thermothrix ruber* gen. nov., sp. nov., a pink-filament-forming hyperthermophilic bacterium isolated from Yellowstone National Park. *Appl. Environ. Microbiol.* 64, 3576-3583.
- Inskeep, W.P., Jay, Z.J., Tringe, S.G., Herrgard, M.J., Rusch, D.B. and Members, Y.M.P.S.C.a.W.G. (2013) The YNP metagenomic project: environmental parameters responsible for microbial distribution in the Yellowstone geothermal ecosystem. *Front. Microbiol.* 4, doi: 10.3389/fmicb.2013.00067.
- Jay, Z.J. (2014) Linking geochemistry with microbial community structure and function in sulfidic geothermal systems of Yellowstone National Park, Land Resources and Environmental Sciences. Montana State University, Bozeman, MT, p. 258.
- Jay, Z.J. and Inskeep, W.P. (2015) The distribution, diversity, and importance of 16S rRNA gene introns in the order Thermoproteales. *Biol. Direct* 10, doi:10.1186/s13062-015-0065-6.
- Liu, Z., Klatt, C.G., Ludwig, M., Rusch, D.B., Jensen, S.I., Kuhl, M., Ward, D.M. and Bryant, D.A. (2012) '*Candidatus* Thermochlorobacter aerophilum': an aerobic chlorophotoheterotrophic member of the phylum *Chlorobi* defined by metagenomics and metatranscriptomics. *ISME J.* 6, 1869-1882.
- Meyer-Dombard, D.R., Shock, E.L. and Amend, J.P. (2005) Archaeal and bacterial communities in geochemically diverse hot springs of Yellowstone National Park, USA. *Geobiology* 3, 211-227.
- Meyer-Dombard, D.R., Swingley, W., Raymond, J., Havig, J.R., Shock, E.L. and Summons, R.E. (2011) Hydrothermal ecotones and streamer biofilm communities in the Lower Geyser Basin, Yellowstone National Park. *Environ. Microbiol.* 13, 2216-2231.
- Miller-Coleman, R.L., Dodsworth, J.A., Ross, C.A., Shock, E.L., Williams, A., Hartnett, H.E., McDonald, A.I., Havig, J.R. and Hedlund, B.P. (2012) Korarchaeota diversity, biogeography, and abundance in Yellowstone and Great Basin hot springs and ecological niche modeling based on machine learning. *PLoS One* 7, e35964.
- Murphy, C.N., Dodsworth, J.A., Babbitt, A.B. and Hedlund, B.P. (2013) Community microrespirometry and molecular analyses reveal a diverse energy economy in Great Boiling Spring and Sandy's Spring West in the US Great Basin. *Appl. Environ. Microbiol.* 79, 3306-3310.

Peacock, J.P., Cole, J.K., Murugapiran, S.K., Dodsworth, J.A., Fisher, J.C., Moser, D.P. and Hedlund, B.P. (2013) Pyrosequencing reveals high-temperature cellulolytic microbial consortia in Great Boiling Spring after in situ lignocellulose enrichment. *Plos One* 8, e59927.

Reysenbach, A.-L., Wickham, G.S. and Pace, N.R. (1994) Phylogenetic analysis of the hyperthermophilic pink filament community in Octopus Spring, Yellowstone National Park. *Appl. Environ. Microbiol.* 60, 2113-1229.

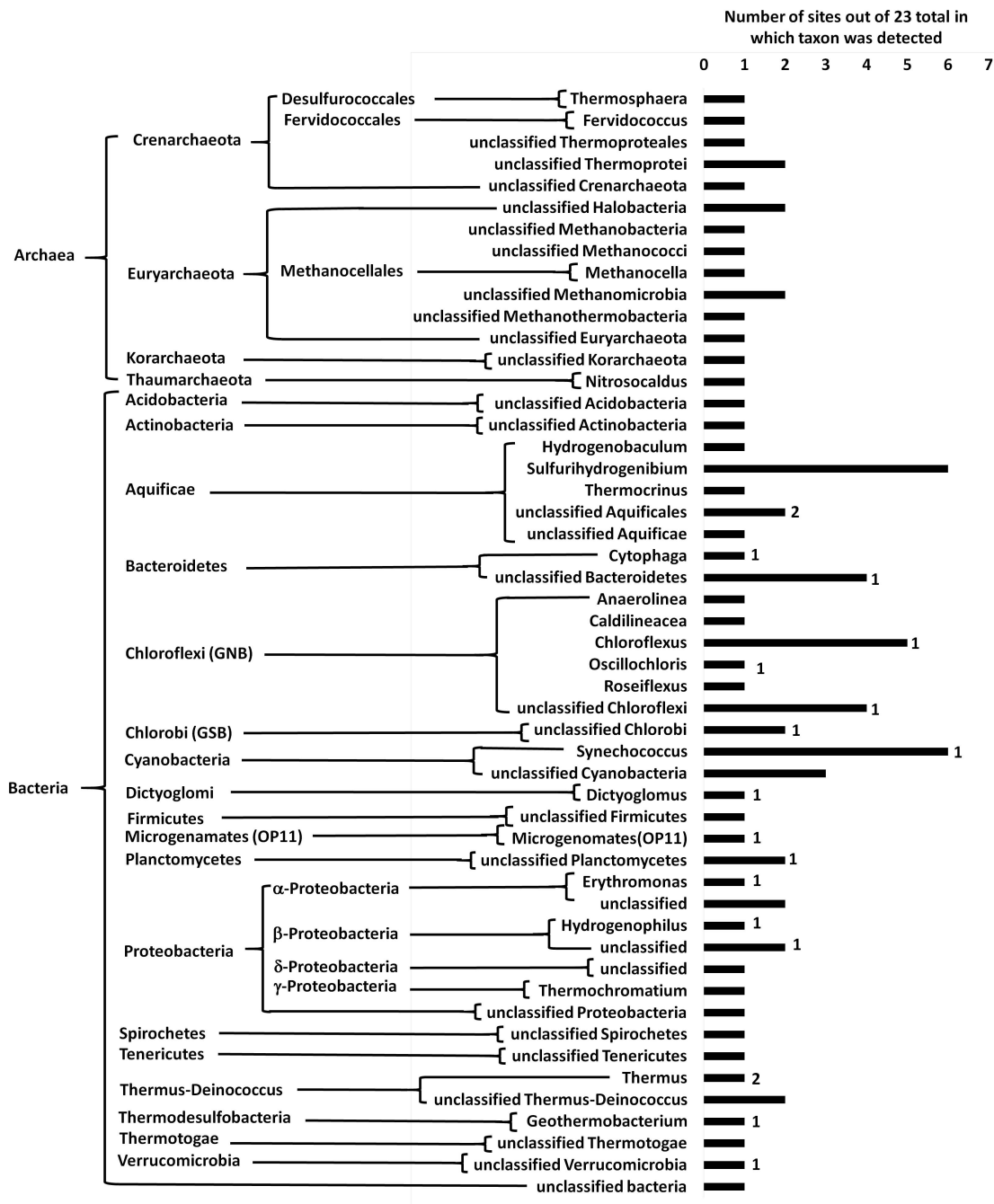
Rinke, C., Schwientek, P., Sczyrba, A., Ivanova, N.N., Anderson, I.J., Cheng, J.-F., Darling, A., Malfatti, S., Swan, B.K., Gies, E.A., Dodsworth, J.A., Hedlund, B.P., Tsiamis, G., Sievert, S.M., Liu, W.-T., Eisen, J.A., Hallam, S.J., Kyrpides, N.C., Stepanauskas, R., Rubin, E.M., Hugenholtz, P. and Woyke, T. (2013) Insights into the phylogeny and coding potential of microbial dark matter. *Nature* 499, 431-437.

Spear, J.R., Walker, J.J., McCollom, T.M. and Pace, N.R. (2005) Hydrogen and bioenergetics in the Yellowstone geothermal ecosystem. *PNAS (USA)* 102, 2555-2560.

Swingle, W.D., Meyer-Dombard, D.A.R., Shock, E.L., Alsop, E.B., Falenski, H.D., Havig, J.R. and Raymond, J. (2012) Coordinating environmental genomics and geochemistry reveals metabolic transitions in a hot spring ecosystem. *Plos One* 7, e38108.

Takacs-Vesbach, C., Inskip, W.P., Jay, Z.J., Herrgard, M.J., Rusch, D.B., Tringe, S.G., Kozubal, M.A., Hamamura, N., Macur, R.E., Fouke, B.W., Reysenbach, A.-L., McDermott, T.R., Jennings, R.d., Hengartner, N.W. and Xie, G. (2013) Metagenome sequence analysis of filamentous microbial communities obtained from geochemically distinct geothermal channels reveals specialization of three aquificales lineages. *Front. Microbiol.* 4, doi:10.3389/fmicb.2013.00084.

Takacs-Vesbach, C., Mitchell, K., Jackson-Weaver, O. and Reysenbach, A.-L. (2008) Volcanic calderas delineate biogeographical provinces among Yellowstone thermophiles. *Environ. Microbiol.* 10, 1681-1689.



SI Figure 2c. Taxa detected in neutral (pH 4.5-8.0) moderate temperature (55-73C) sulfidic (>3.0 mM) springs of western North America. Numeral indicates number of sites with Hg data.

Figure 2c References

Clingenpeel, S., Macur, R.E., Kan, J., Inskeep, W.P., Lovalvo, D., Varley, J., Mathur, E., Nealson, K., Gorby, Y., Jiang, H., LaFracois, T. and McDermott, T.R. (2011) Yellowstone Lake: high-energy geochemistry and rich bacterial diversity. *Environ. Microbiol.* 13, 2172-2185.

Connon, S.A., Koski, A.K., Neal, A.L., Wood, S.A. and Magnuson, T.S. (2008) Ecophysiology and geochemistry of microbial arsenic oxidation within a high arsenic, circumneutral hot spring system of the Alvord Desert. *FEMS Microbiol. Ecol.* 64, 117-128.

Dunfield, P.F., Tamas, I., Lee, K.C., Morgan, X.C., McDonald, I.R. and Stott, M.B. (2012) Electing a candidate: a speculative history of the bacterial phylum OP10. *Environ. Microbiol.* 14, 3069-3080.

Fouke, B.W., Bonheyo, G.T., Sanzenbacher, B. and Frias-Lopez, J. (2003) Partitioning of bacterial communities between travertine depositional facies at Mammoth Hot Springs, Yellowstone National Park, U.S.A. *Can. J. Earth Sci.* 40, 1531-1548.

Inskeep, W.P., Jay, Z.J., Tringe, S.G., Herrgard, M.J., Rusch, D.B. and Members, Y.M.P.S.C.a.W.G. (2013) The YNP metagenomic project: environmental parameters responsible for microbial distribution in the Yellowstone geothermal ecosystem. *Front. Microbiol* 4, doi: 10.3389/fmicb.2013.00067.

Inskeep, W.P., Rusch, D.B., Jay, Z., Herrgard, M.J., Kozubal, M.A., Richardson, T.H., Macur, R.E., Hamamura, N., Jennings, R.d., Fouke, B.W., Reysenbach, A.-L., Roberto, F., Young, M., Schwartz, A., Boyd, E.S., Badger, J., Mathur, E.J., Ortmann, A.C., Bateson, M., Geesey, G. and Frazier, M. (2010) Metagenomes from high-temperature chemotrophic systems reveal geochemical controls on microbial community structure and function. *PLoS One* 5, e9773.

Kan, J., Clingenpeel, S., Macur, R.E., Inskeep, W.P., Lovalvo, D., Varley, J., Gorby, Y., McDermott, T.R. and Nealson, K. (2011) Archaea in Yellowstone Lake. *ISME J.* 5, 1784-1795.

King, S.A., Behnke, S., Slack, K., Krabbenhoft, D.P., Nordstrom, D.K., Burr, M.D. and Striegl, R.G. (2006) Mercury in water and biomass of microbial communities in hot springs of Yellowstone National Park, USA. *Appl. Geochem.* 21, 1868-1879.

Klatt, C.G., Inskeep, W.P., Herrgard, M.J., Jay, Z.J., Rusch, D.B., Tringe, S.G., Parenteau, M.N., Ward, D.M., Boomer, S.M., Bryant, D.A. and Miller, S.R. (2013) Community structure and function of high-temperature chlorophototrophic microbial mats inhabiting diverse geothermal environments. *Front. Microbiol* 4, doi: 10.3389/fmicb.2013.00106.

Miller-Coleman, R.L., Dodsworth, J.A., Ross, C.A., Shock, E.L., Williams, A., Hartnett, H.E., McDonald, A.I., Havig, J.R. and Hedlund, B.P. (2012) Korarchaeota diversity, biogeography, and abundance in Yellowstone and Great Basin hot springs and ecological niche modeling based on machine learning. *PLoS One* 7, e35964.

Nordstrom, D.K., Hasselbach, L., Ingbritsen, S.E., Skorupa, D., McCleskey, R.B. and McDermott, T.R. (2015) An environmental survey of Serpentine Hot Springs: Geology,

hydrology, geochemistry and microbiology., Natural Resources Report NPS/BELA/NRR-2015/1019 U.S. National Parks Service, Fort Collins, CO.

Papke, T.R., Ramsing, N.B., Bateson, M.M. and Ward, D.M. (2003) Geographical isolation in hot spring cyanobacteria. *Environ. Microbiol.* 5, 650-659.

Reysenbach, A.-L., Banta, A., Civello, S., Daly, J., Mitchel, K., Lalonde, S., Konhauser, K., Rodman, A., Rusterholtz, K. and Takacs-Vesbach, C. (2005) Aquificales in Yellowstone National Park, in: Inskip, W.P., McDermott, T.M. (Eds.), *Geothermal Biology and Geochemistry in Yellowstone National Park*. Thermal Biology Institute and Department of Land Resources & Environmental Sciences, Bozeman, pp. 129-142.

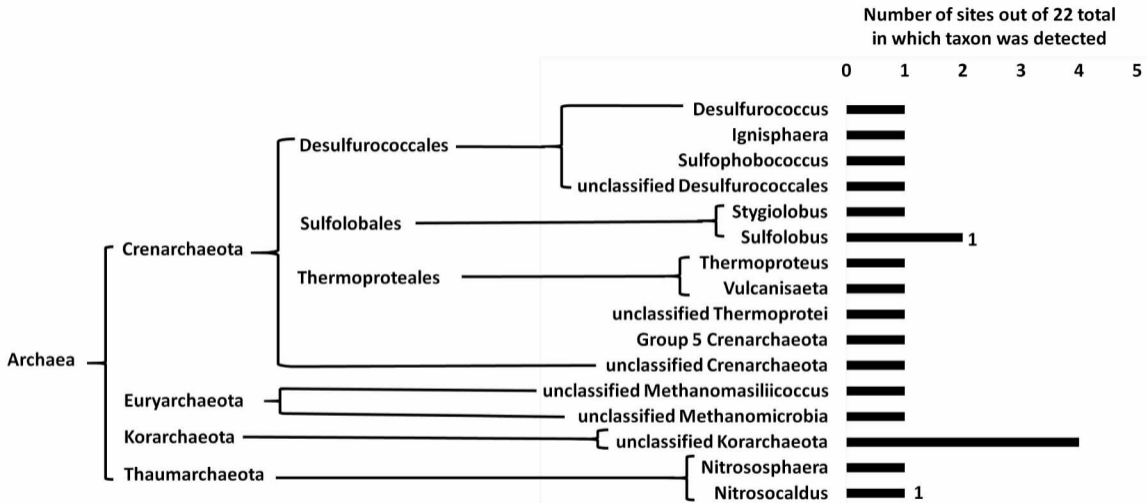
Stoehr, R., Waberski, A., Liesack, W., Voelker, H., Wehmeyer, U. and Thomm, M. (2001) *Hydrogenophilus hirschii* sp. nov., a novel thermophilic hydrogen-oxidizing beta-proteobacterium isolated from Yellowstone National Park. *Internat. J. Syst. Evol. Microbiol.* 51, 481-488.

Takacs-Vesbach, C., Inskip, W.P., Jay, Z.J., Herrgard, M.J., Rusch, D.B., Tringe, S.G., Kozubal, M.A., Hamamura, N., Macur, R.E., Fouke, B.W., Reysenbach, A.-L., McDermott, T.R., Jennings, R.d., Hengartner, N.W. and Xie, G. (2013) Metagenome sequence analysis of filamentous microbial communities obtained from geochemically distinct geothermal channels reveals specialization of three aquificales lineages. *Front. Microbiol.* 4, doi:10.3389/fmicb.2013.00084.

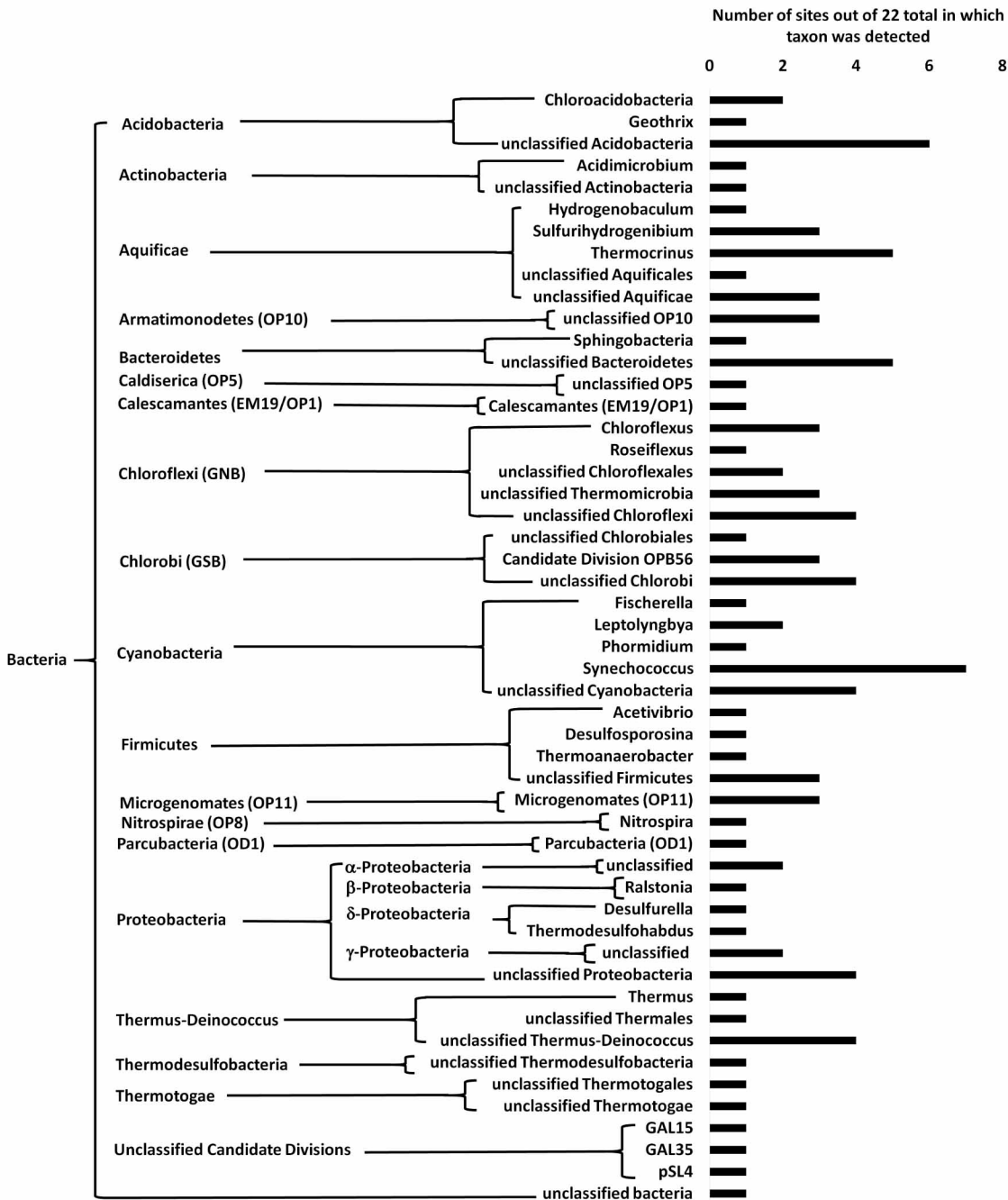
Takacs-Vesbach, C., Mitchell, K., Jackson-Weaver, O. and Reysenbach, A.-L. (2008) Volcanic calderas delineate biogeographical provinces among Yellowstone thermophiles. *Environ. Microbiol.* 10, 1681-1689.

van der Meer, M.T.J., Schouten, S., Damste, J.S.S., de Leeuw, J.W. and Ward, D.M. (2003) Compound-specific isotopic fractionation patterns suggest different carbon metabolisms among *Chloroflexus*-like bacteria in hot-spring microbial mats. *Appl. Environ. Microbiol.* 69, 6000-6006.

Vishnivetskaya, T.A., Hamilton-Brehm, S.D., Podar, M., Mosher, J.J., Palumbo, A.V., Phelps, T.J., Keller, M. and Elkins, J.G. (2015) Community analysis of plant biomass-degrading microorganisms from Obsidian Pool, Yellowstone National Park. *Microb. Ecol.* 69, 333-345.



SI Figure 2d-1. Taxa detected in neutral (pH 4.5-8.0) moderate temperature (55-73C) nonsulfidic (<3.0 mM) springs of western North America. Numeral indicates number of sites with Hg data.



SI Figure 2d-2. Taxa detected in neutral (pH 4.5-8.0) moderate temperature (55-73C) nonsulfidic (<3.0 mM) springs of western North America. Numeral indicates number of sites with Hg data.

Figure 2d References

Boyd, E.S., Hamilton, T.L., Wang, J., He, L. and Zhang, C.L. (2013) The role of tetraether lipid composition in the adaptation of thermophilic archaea to acidity. *Front. Microbiol.* 4, doi: 10.3389/fmicb.2013.00062.

Chapelle, F.H., O'Neill, K., Bradley, P.M., Methe, B.A., Ciufo, S.A., Knobel, L.L. and Lovley, D.R. (2002) A hydrogen-based subsurface microbial community dominated by methanogens. *Nature* 415, 312-315.

Cole, J.K., Peacock, J.P., Dodsworth, J.A., Williams, A.J., Thompson, D.B., Dong, H., Wu, G. and Hedlund, B.P. (2013) Sediment microbial communities in Great Boiling Spring are controlled by temperature and distinct from water communities. *ISME J.* 7, 718-729.

Dick, J.M. and Shock, E.L. (2013) A metastable equilibrium model for the relative abundances of microbial phyla in a hot spring. *Plos One* 8, e72395.

Ferris, M.J., Muyzer, G. and Ward, D.M. (1996) Denaturing gradient gel electrophoresis profiles of 16S rRNA-defined populations inhabiting a hot spring microbial mat community. *Appl. Environ. Microbiol.* 62, 340-346.

Ferris, M.J., Nold, S.C., Revsbech, N.P. and Ward, D.M. (1997) Population structure and physiological changes within a hot spring microbial mat community following disturbance. *Appl. Environ. Microbiol.* 63, 1367-1374.

Hall, J.R., Mitchell, K.R., Jackson-Weaver, O., Kooser, A.S., Cron, B.R., Crossey, L.J. and Takacs-Vesbach, C.D. (2008) Molecular characterization of the diversity and distribution of a thermal spring microbial community by using rRNA and metabolic genes. *Appl. Environ. Microbiol.* 74, 4910-4922.

Havig, J.R., Raymond, J., Meyer-Dombard, D.A.R., Zolotova, N. and Shock, E.L. (2011) Merging isotopes and community genomics in a siliceous sinter-depositing hot spring. *J. Geophys. Res. Biogeosciences* 116, doi:10.1029/2010JG001415.

Inskeep, W.P., Jay, Z.J., Tringe, S.G., Herrgard, M.J., Rusch, D.B. and Members, Y.M.P.S.C.a.W.G. (2013) The YNP metagenomic project: environmental parameters responsible for microbial distribution in the Yellowstone geothermal ecosystem. *Front. Microbiol.* 4, doi: 10.3389/fmicb.2013.00067.

Meyer-Dombard, D.R., Swingle, W., Raymond, J., Havig, J.R., Shock, E.L. and Summons, R.E. (2011) Hydrothermal ecotones and streamer biofilm communities in the Lower Geyser Basin, Yellowstone National Park. *Environ. Microbiol.* 13, 2216-2231.

Miller-Coleman, R.L., Dodsworth, J.A., Ross, C.A., Shock, E.L., Williams, A., Hartnett, H.E., McDonald, A.I., Havig, J.R. and Hedlund, B.P. (2012) Korarchaeota diversity, biogeography, and abundance in Yellowstone and Great Basin hot springs and ecological niche modeling based on machine learning. *PLoS One* 7, e35964.

Papke, T.R., Ramsing, N.B., Bateson, M.M. and Ward, D.M. (2003) Geographical isolation in hot spring cyanobacteria. *Environ. Microbiol.* 5, 650-659.

Ramsing, N.B., Ferris, M.J. and Ward, D.M. (2000) Highly ordered vertical structure of *Synechococcus* populations within the one-millimeter-thick photic zone of a hot spring cyanobacterial mat. *Appl. Environ. Microbiol.* 66, 1038-1049.

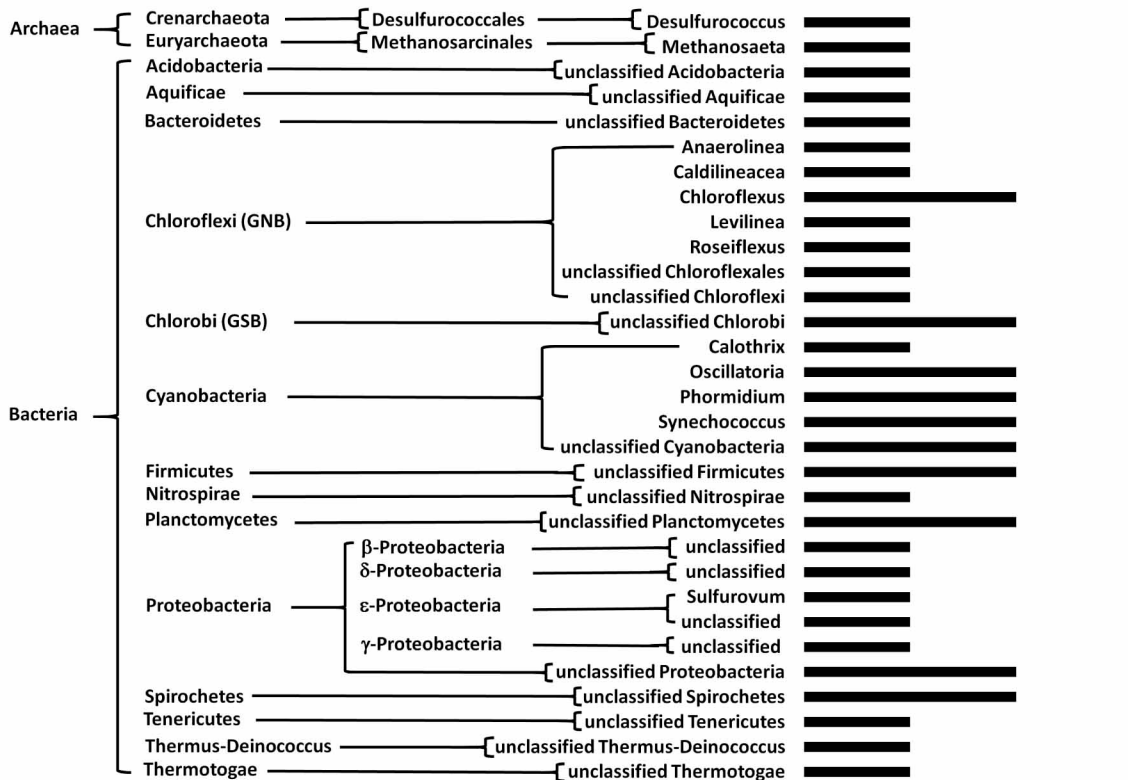
Ross, K.A., Feazel, L.M., Robertson, C.E., Fathepure, B.Z., Wright, K.E., Turk-MacLeod, R.M., Chan, M.M., Held, N.L., Spear, J.R. and Pace, N.R. (2012) Phototrophic phylotypes dominate mesothermal microbial mats associated with hot springs in Yellowstone National Park. *Microb. Ecol.* 64, 162-170.

Swingley, W.D., Meyer-Dombard, D.A.R., Shock, E.L., Alsop, E.B., Falenski, H.D., Havig, J.R. and Raymond, J. (2012) Coordinating environmental genomics and geochemistry reveals metabolic transitions in a hot spring ecosystem. *Plos One* 7, e38108.

Takacs-Vesbach, C., Mitchell, K., Jackson-Weaver, O. and Reysenbach, A.-L. (2008) Volcanic calderas delineate biogeographical provinces among Yellowstone thermophiles. *Environ. Microbiol.* 10, 1681-1689.

Number of sites out of 9 total in which
taxon was detected

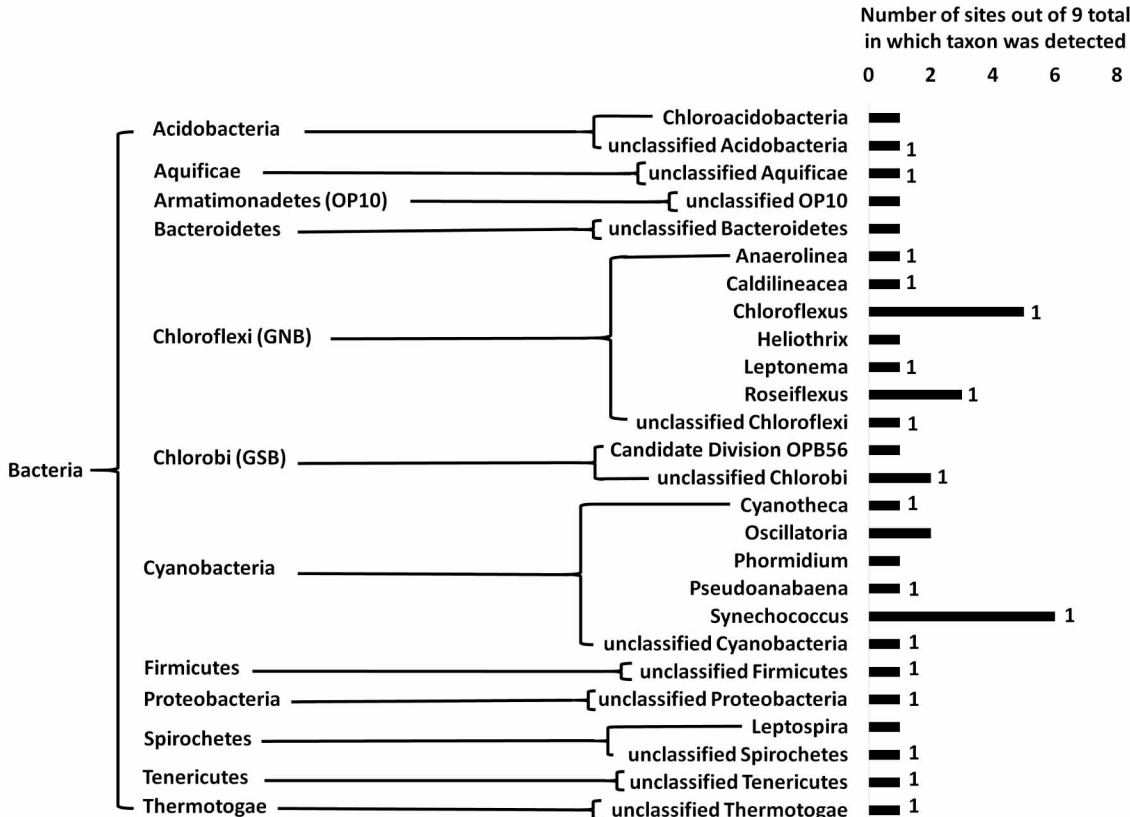
0 1 2 3



SI Figure 2e. Taxa detected in neutral (pH 4.5-8.0) low temperature (<55C) sulfidic (>3.0 mM) springs of western North America.

Figure 2e References

- Bonny, S. and Jones, B. (2003) Microbes and mineral precipitation, Miette Hot Springs, Jasper National Park, Alberta, Canada. *Can. J. Earth Sci.* 40, 1483-1500.
- Boyd, E.S., Hamilton, T.L., Wang, J., He, L. and Zhang, C.L. (2013) The role of tetraether lipid composition in the adaptation of thermophilic archaea to acidity. *Front. Microbiol.* 4, 62. doi: 10.3389/fmicb.2013.00062.
- Doemel, W.N. and Brock, T.D. (1977) Structure, growth, and decomposition of laminated algal bacterial mats in alkaline hot springs. *Appl. Environ. Microbiol.* 34, 433-452.
- Headd, B. and Engel, A.S. (2014) Biogeographic congruency among bacterial communities from terrestrial sulfidic springs. *Front. Microbiol.* 5, 473. doi: 10.3389/fmicb.2014.00473.
- Klatt, C.G., Inskeep, W.P., Herrgard, M.J., Jay, Z.J., Rusch, D.B., Tringe, S.G., Parenteau, M.N., Ward, D.M., Boomer, S.M., Bryant, D.A. and Miller, S.R. (2013) Community structure and function of high-temperature chlorophototrophic microbial mats inhabiting diverse geothermal environments. *Front. Microbiol.* 4, doi: 10.3389/fmicb.2013.00106.
- Rossmassler, K., Engel, A.S., Twing, K.I., Hanson, T.E. and Campbell, B.J. (2012) Drivers of epsilonproteobacterial community composition in sulfidic caves and springs. *FEMS Microbiol. Ecol.* 79, 421-432.
- Spear, J.R., Barton, H.A., Robertson, C.E., Francis, C.A. and Pace, N.R. (2007) Microbial community biofabrics in a geothermal mine adit. *Appl. Environ. Microbiol.* 73, 6172-6180.



SI Figure 2f. Taxa detected in neutral (pH 4.5-8.0) low temperature (<55°C) nonsulfidic (<3.0 mM) springs of western North America. Numeral indicates number of sites with Hg data.

Figure 2f References

- Allewalt, J.P., Bateson, M.M., Revsbech, N.P., Slack, K. and Ward, D.M. (2006) Effect of temperature and light on growth of and photosynthesis by *Synechococcus* isolates typical of those predominating in the octopus spring microbial mat community of Yellowstone National Park. *Appl. Environ. Microbiol.* 72, 544-550.
- Boomer, S.M., Lodge, D.P., Dutton, B.E. and Pierson, B. (2002) Molecular characterization of novel red green nonsulfur bacteria from five distinct hot spring communities in Yellowstone National Park. *Appl. Environ. Microbiol.* 68, 346-355.
- Dodsworth, J.A., Gevorkian, J., Despujos, F., Cole, J.K., Murugapiran, S.K., Ming, H., Li, W.-J., Zhang, G., Dohnalkova, A. and Hedlund, B.P. (2014) *Thermoflexus hugenholtzii* gen. nov., sp. nov., a thermophilic, microaerophilic, filamentous bacterium representing a novel class in the *Chloroflexi*, *Thermoflexia* classis nov., and description of *Thermoflexaceae* fam. nov and *Thermoflexales* ord. nov. *Internat. J. Syst. Evol. Microbiol.* 64, 2119-2127.
- Edwards, T.A., Calica, N.A., Huang, D.A., Manoharan, N., Hou, W., Huang, L., Panosyan, H., Dong, H. and Hedlund, B.P. (2013) Cultivation and characterization of thermophilic *Nitrospira* species from geothermal springs in the US Great Basin, China, and Armenia. *FEMS Microbiol. Ecol.* 85, 283-292.
- Ferris, M.J., Muyzer, G. and Ward, D.M. (1996) Denaturing gradient gel electrophoresis profiles of 16S rRNA-defined populations inhabiting a hot spring microbial mat community. *Appl. Environ. Microbiol.* 62, 340-346.
- Inskeep, W.P., Jay, Z.J., Tringe, S.G., Herrgard, M.J., Rusch, D.B. and Members, Y.M.P.S.C.a.W.G. (2013) The YNP metagenomic project: environmental parameters responsible for microbial distribution in the Yellowstone geothermal ecosystem. *Front. Microbiol* 4, 67. doi: 10.3389/fmicb.2013.00067.
- Klatt, C.G., Inskeep, W.P., Herrgard, M.J., Jay, Z.J., Rusch, D.B., Tringe, S.G., Parenteau, M.N., Ward, D.M., Boomer, S.M., Bryant, D.A. and Miller, S.R. (2013) Community structure and function of high-temperature chlorophototrophic microbial mats inhabiting diverse geothermal environments. *Front. Microbiol* 4, doi: 10.3389/fmicb.2013.00106.
- Parenteau, M.N. and Cady, S.L. (2010) Microbial biosignatures in iron-mineralized phototrophic mats at Chocolate Pots Hot Springs, Yellowstone National Park, United States. *Palaios* 25, 97-111.
- Ross, K.A., Feazel, L.M., Robertson, C.E., Fathepure, B.Z., Wright, K.E., Turk-MacLeod, R.M., Chan, M.M., Held, N.L., Spear, J.R. and Pace, N.R. (2012) Phototrophic phylotypes dominate mesothermal microbial mats associated with hot springs in Yellowstone National Park. *Microb. Ecol.* 64, 162-170.

Weller, R., Bateson, M.M., Heimbuch, B.K., Koczynski, E.D. and Ward, D.M. (1992)
Uncultivated cyanobacteria, *Chloroflexus*-like inhabitants, and spirochete-like inhabitants of a
hot-spring microbial mat. Appl. Environ. Microbiol. 58, 3964-3969.