



Lines in space
by Nancy Bales Nordtvedt

A thesis submitted in partial fulfillment of the requirements for the degree of MASTER OF APPLIED ART

Montana State University

© Copyright by Nancy Bales Nordtvedt (1978)

Abstract:

The human body, its forms, connective structures, stresses, changes of direction and movement are influential in my work. Consciously and intuitively my compulsion is to reflect the body's shapes in metal forms. These pieces have a natural relationship with the body's curves, angles, planar strength and shifting surfaces.

My technical involvement includes the use of traditional techniques of blacksmithing and forging as they can be applied to the design of contemporary jewelry and metal forms.

There is an excitement in utilizing contrasts in material, steel and copper against the richness of colored silk, ivory and fine silver. These are symbols of utility and durability, hard and cold, juxtaposed against symbols of elegance and fragility, soft, colorful and richly lustrous.

The formal aspects of lines drawn in space represent paths of movement, rhythm and form. Asymmetry produces visual tension and linear involvement which surrounds and encloses space, creating negative areas that play against one another.

I have combined these elements, and by limiting my materials and techniques, explored and expanded the artistic possibilities within, a small area of metal smithing.

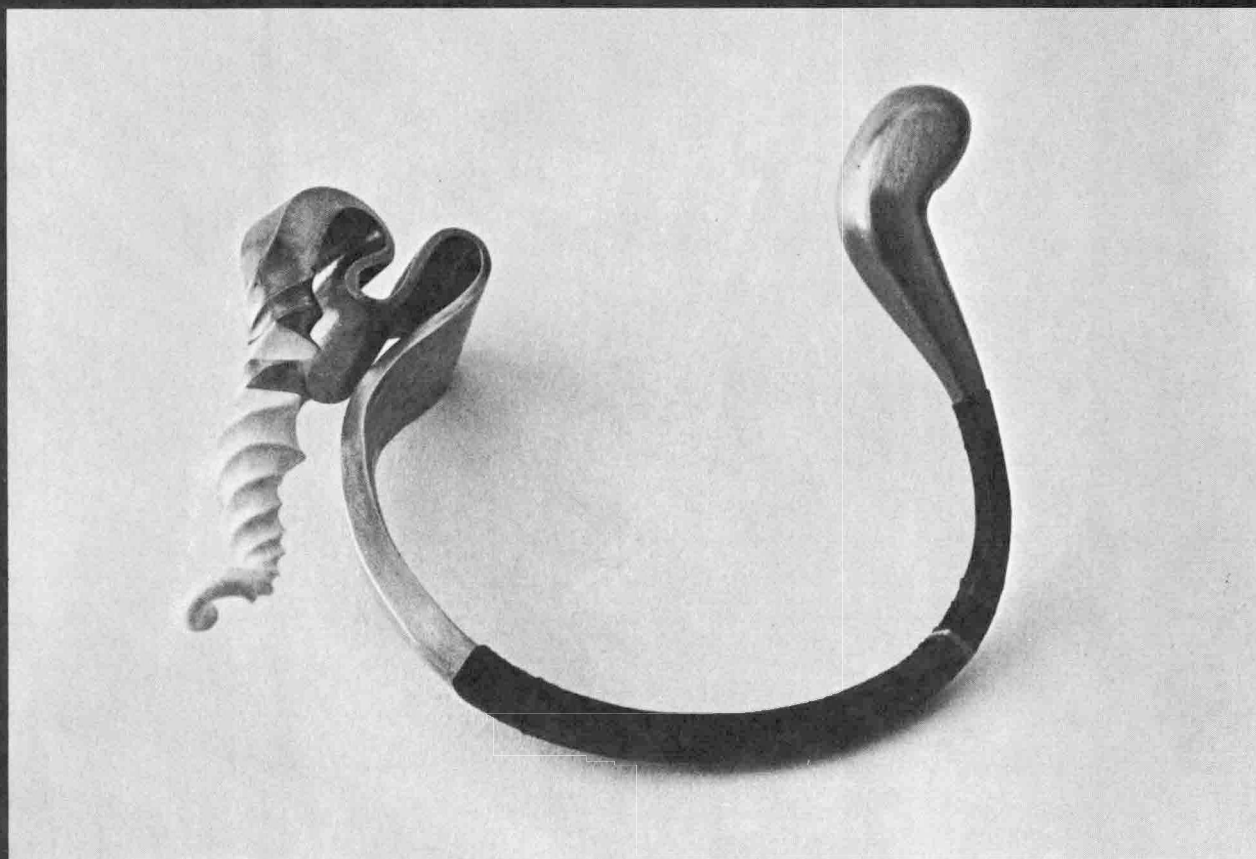
Montana State University
School of Art, Haynes Hall

May 22 through June 2, 1978

Thesis Exhibition

METALSMITH

NANCY NORDTVEDT



STATEMENT OF PERMISSION TO COPY

In presenting this thesis in partial fulfillment of the requirements for an advanced degree at Montana State University, I agree that the Library shall make it freely available for inspection. I further agree that permission for extensive copying of this thesis for scholarly purposes may be granted by my major professor, or, in his absence, by the Director of Libraries. It is understood that any copying or publication of this thesis for financial gain shall not be allowed without my written permission.

Signature Nancy Sales Nordtveit
Date May 24, 1978

LINES IN SPACE

by

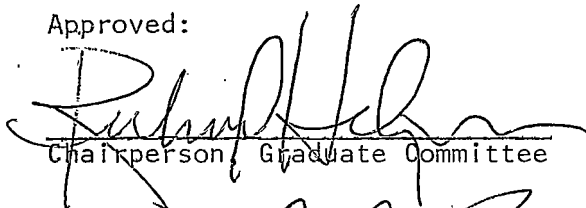
NANCY BALES NORDTVEDT

A thesis submitted in partial fulfillment
of the requirements for the degree

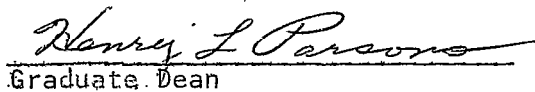
of

MASTER OF APPLIED ART

Approved:


Chairperson, Graduate Committee


Head, Major Department


Graduate Dean

MONTANA STATE UNIVERSITY
Bozeman, Montana

June, 1978

ACKNOWLEDGEMENT

I wish to express my gratitude to the art faculty, especially Richard Helzer, Kyle Hanton and Rick Pope. Their support, encouragement and insight was essential to the development of my ideas and my work. I would also like to thank Pat Gilbert for her help and understanding.

ARTIST'S STATEMENT

The human body, its forms, connective structures, stresses, changes of direction and movement are influential in my work. Consciously and intuitively my compulsion is to reflect the body's shapes in metal forms. These pieces have a natural relationship with the body's curves, angles, planar strength and shifting surfaces.

My technical involvement includes the use of traditional techniques of blacksmithing and forging as they can be applied to the design of contemporary jewelry and metal forms.

There is an excitement in utilizing contrasts in material, steel and copper against the richness of colored silk, ivory and fine silver. These are symbols of utility and durability, hard and cold, juxtaposed against symbols of elegance and fragility, soft, colorful and richly lustrous.

The formal aspects of lines drawn in space represent paths of movement, rhythm and form. Asymmetry produces visual tension and linear involvement which surrounds and encloses space, creating negative areas that play against one another.

I have combined these elements, and by limiting my materials and techniques, explored and expanded the artistic possibilities within a small area of metalsmithing.

SLIDES

- | | | |
|-----|----------------------------|--|
| 1. | Picnic Fork | Steel, fine silver and copper |
| 2. | Shoulder Fibula | Copper and sterling silver |
| 3. | Shoulder Fibula | View 2 |
| 4. | Neckpiece I | Copper and sterling silver |
| 5. | Neckpiece II | Mild steel and silk |
| 6. | Neckpiece III | Copper and silk |
| 7. | Knife I | High carbon steel, ivory and fine silver |
| 8. | Anklet | Copper, ivory and silk |
| 9. | Bracelet | Copper and silk |
| 10. | Bracelet | View 2 |
| 11. | Fibula I | Steel, ivory and silk |
| 12. | Fibula II | Steel and silk |
| 13. | Knife II | High carbon steel, ivory and fine silver |
| 14. | Bacchanalian
Mask Flask | Sterling silver, steel and silk |
| 15. | Bacchanalian
Mask Flask | View 2 |
| 16. | Knife III | High carbon steel and sterling silver |
| 17. | Neckpiece IV | Copper and silk |
| 18. | Headpiece | Steel, cotton and silk |
| 19. | Waistlet I | Steel and silk |
| 20. | Waistlet II | Copper and silk |

